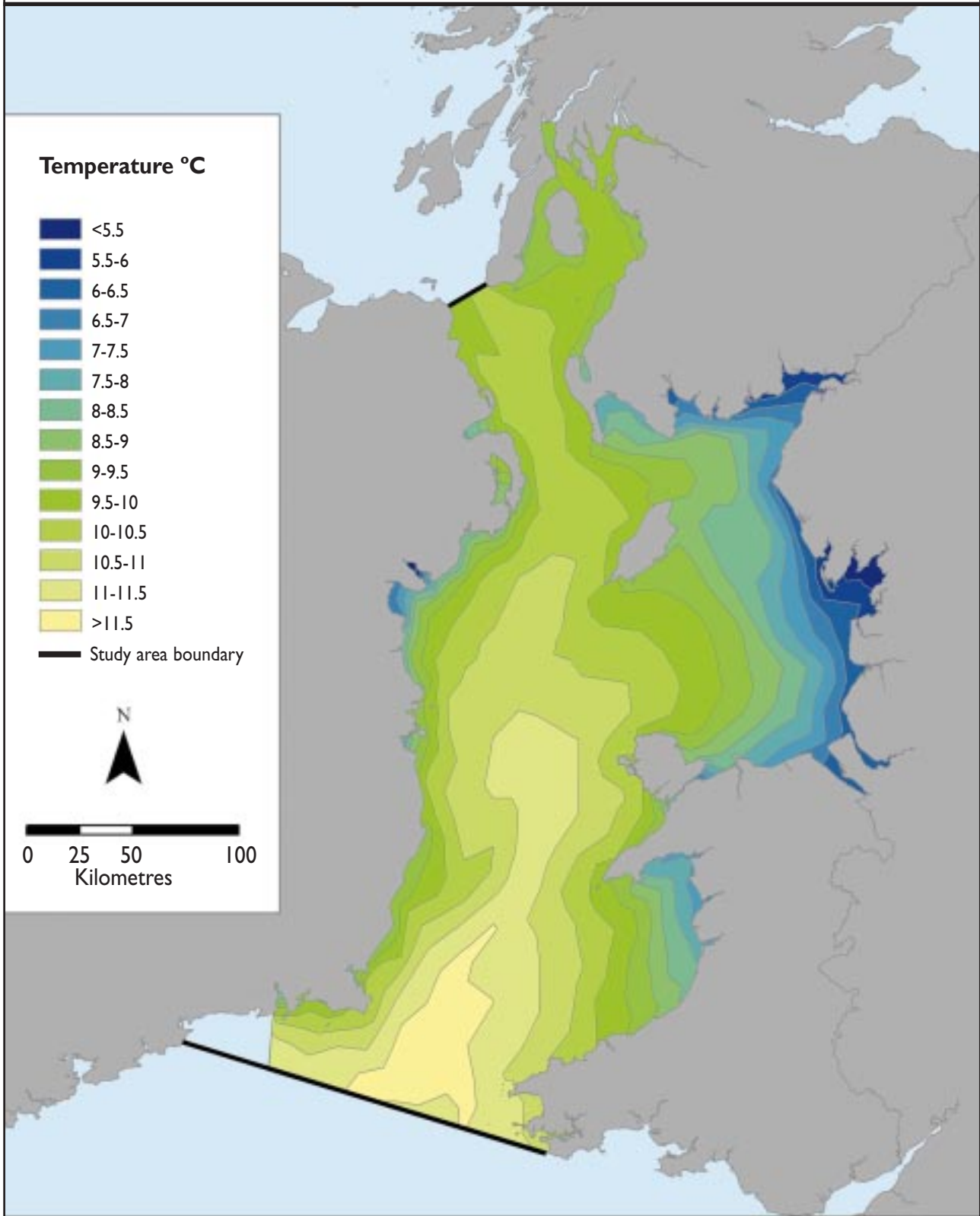




Irish Sea Pilot

Bottom temperature (Dec-Feb)



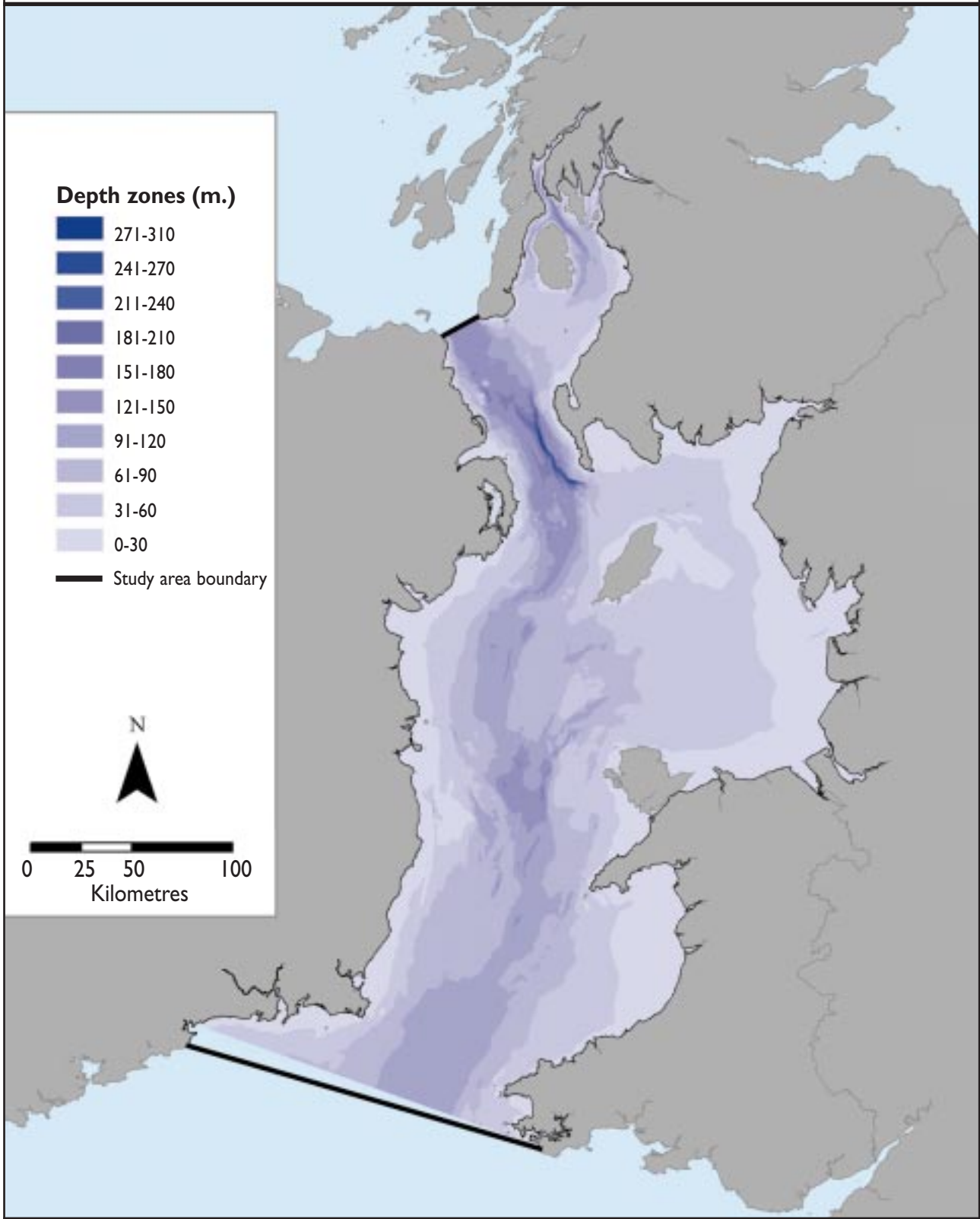
Copyright: Proudman Oceanographic Laboratory © NERC / © Crown copyright. All rights reserved JNCC 100017955, 2004
Acknowledgements: Raw data supplied by Proudman Oceanographic Laboratory; interpolated and clipped by JNCC.

Map version & date
Version 1 | 1/03/2003



Irish Sea Pilot

Processed bathymetry



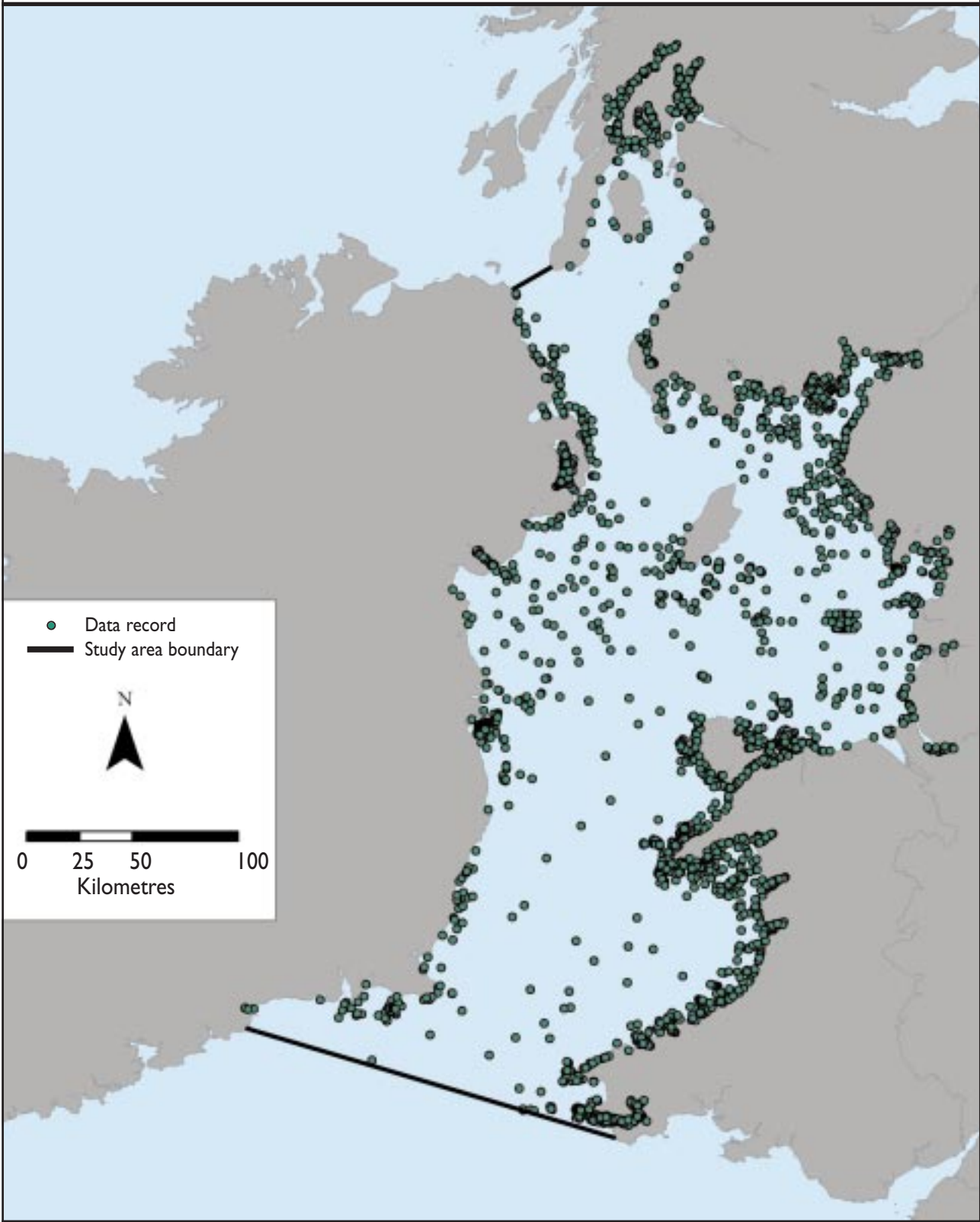
Copyright: British Geological Survey © NERC / © Crown copyright. All rights reserved JNCC 100017955, 2004
Acknowledgements: Digbath250 data supplied under licence by British Geological Survey; converted and clipped by JNCC.

Map version & date
Version 2 26/03/2003



Irish Sea Pilot

Biological data for Marine Landscape validation



Copyright: JNCC 2003 / © Crown copyright. All rights reserved JNCC 100017955, 2004
Acknowledgement: Data from various sources.

Map version & date
Version I 14/03/2003



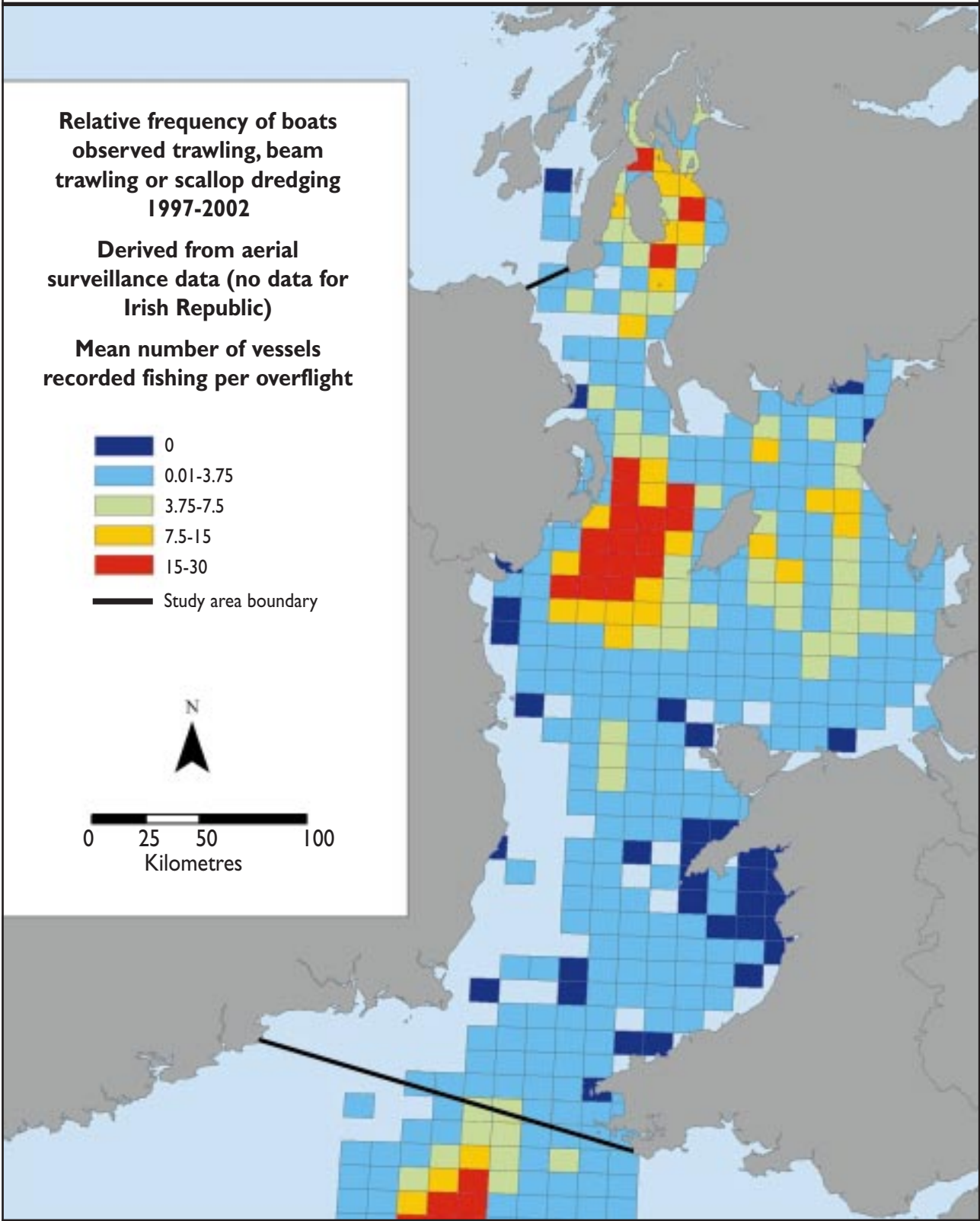
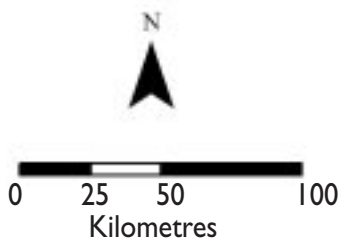
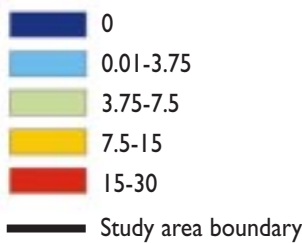
Irish Sea Pilot

Relative frequency of bottom-towed fishing gear use

Relative frequency of boats observed trawling, beam trawling or scallop dredging 1997-2002

Derived from aerial surveillance data (no data for Irish Republic)

Mean number of vessels recorded fishing per overflight

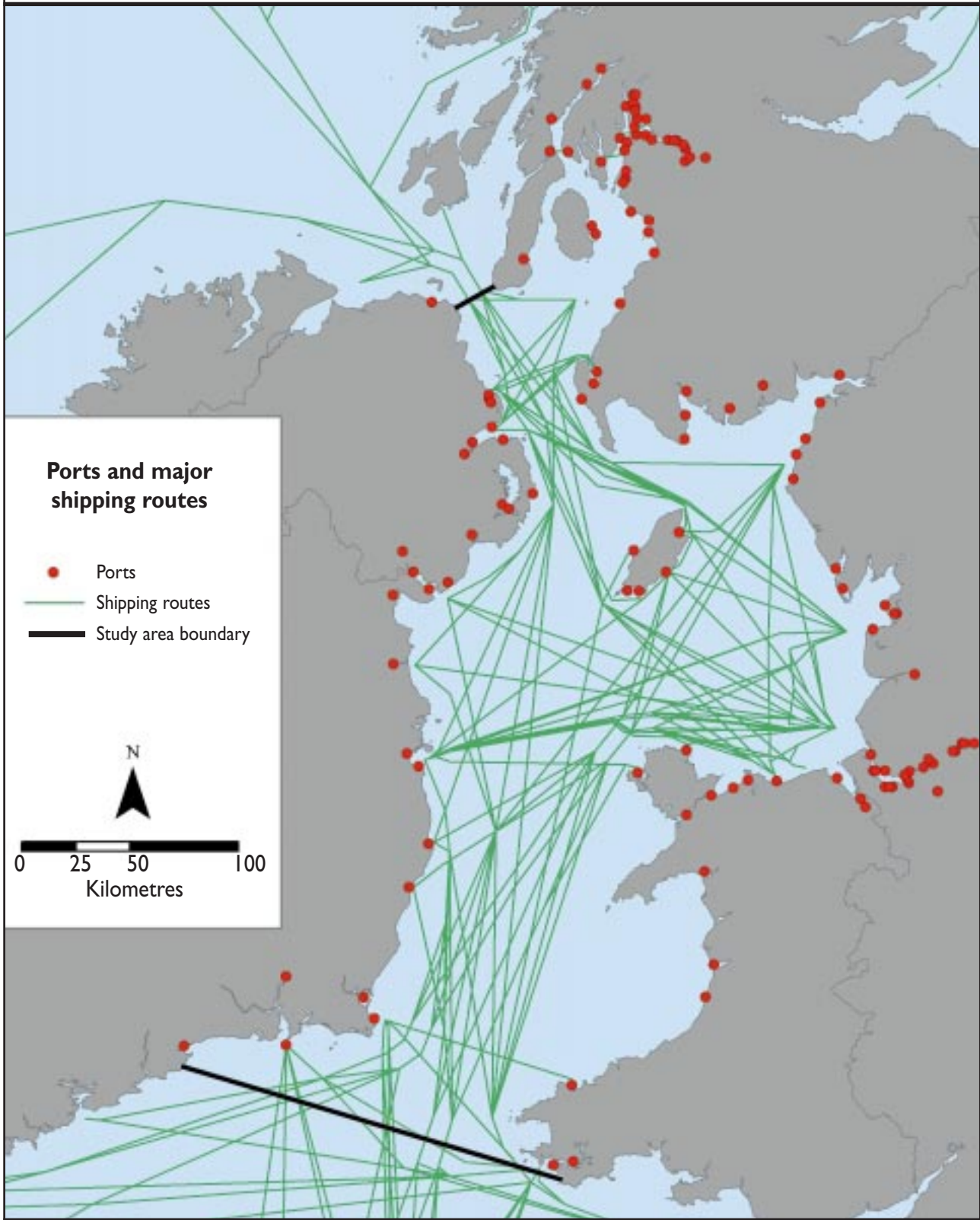


Copyright: © Crown copyright. All rights reserved JNCC 100017955, 2004
Acknowledgments: Defra and Scottish Fisheries Protection Agency supplied the raw, uninterpreted data; Centre for Environment Fisheries and Aquaculture Science converted the data.

Map version & date
Version 1 24/11/2003



Irish Sea Pilot Ports and major shipping routes

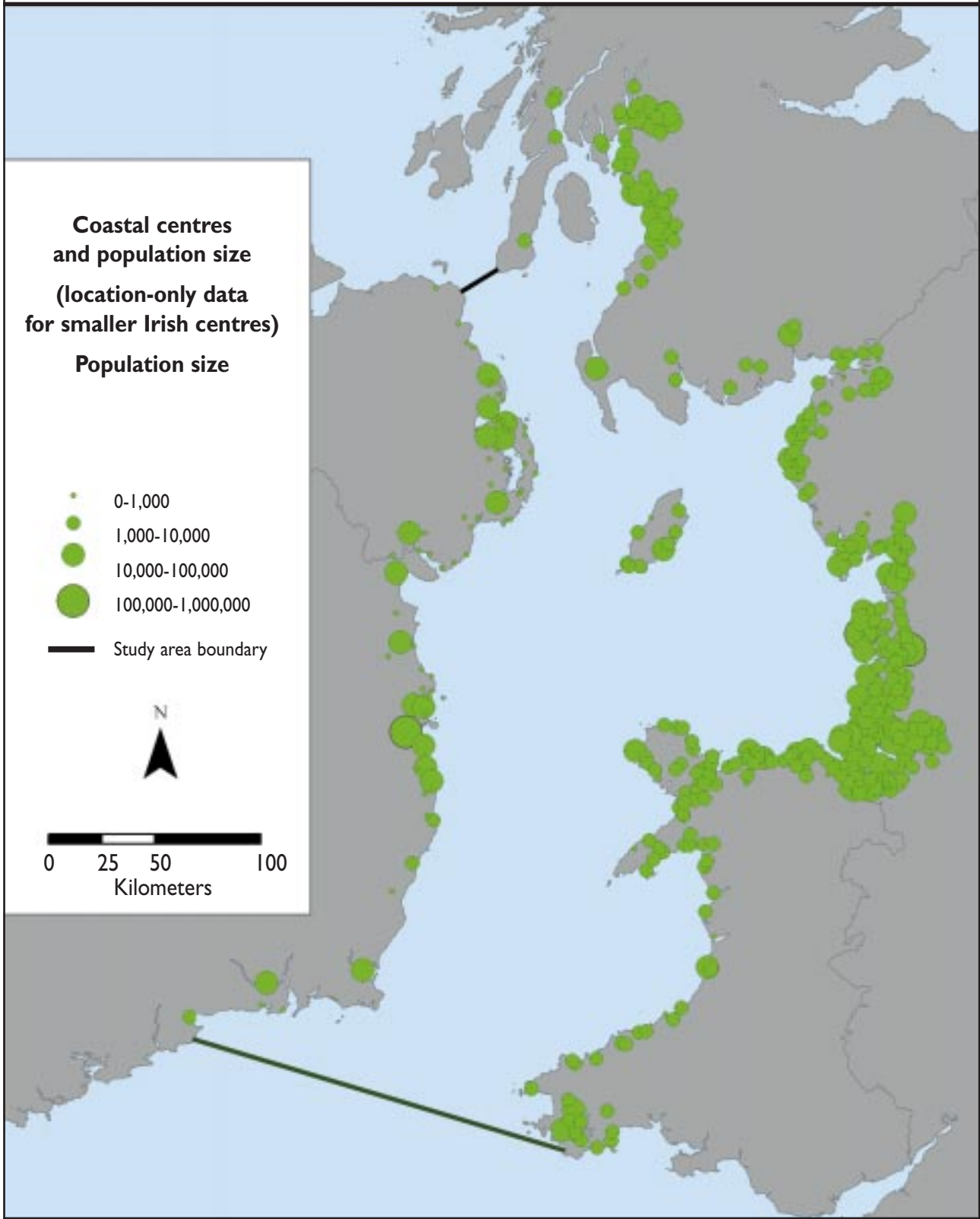


Copyright: Anatec UK Limited / © Crown copyright. All rights reserved JNCC 100017955, 2004

Map version & date
Version I 1/03/2003



Irish Sea Pilot Coastal centres and population size



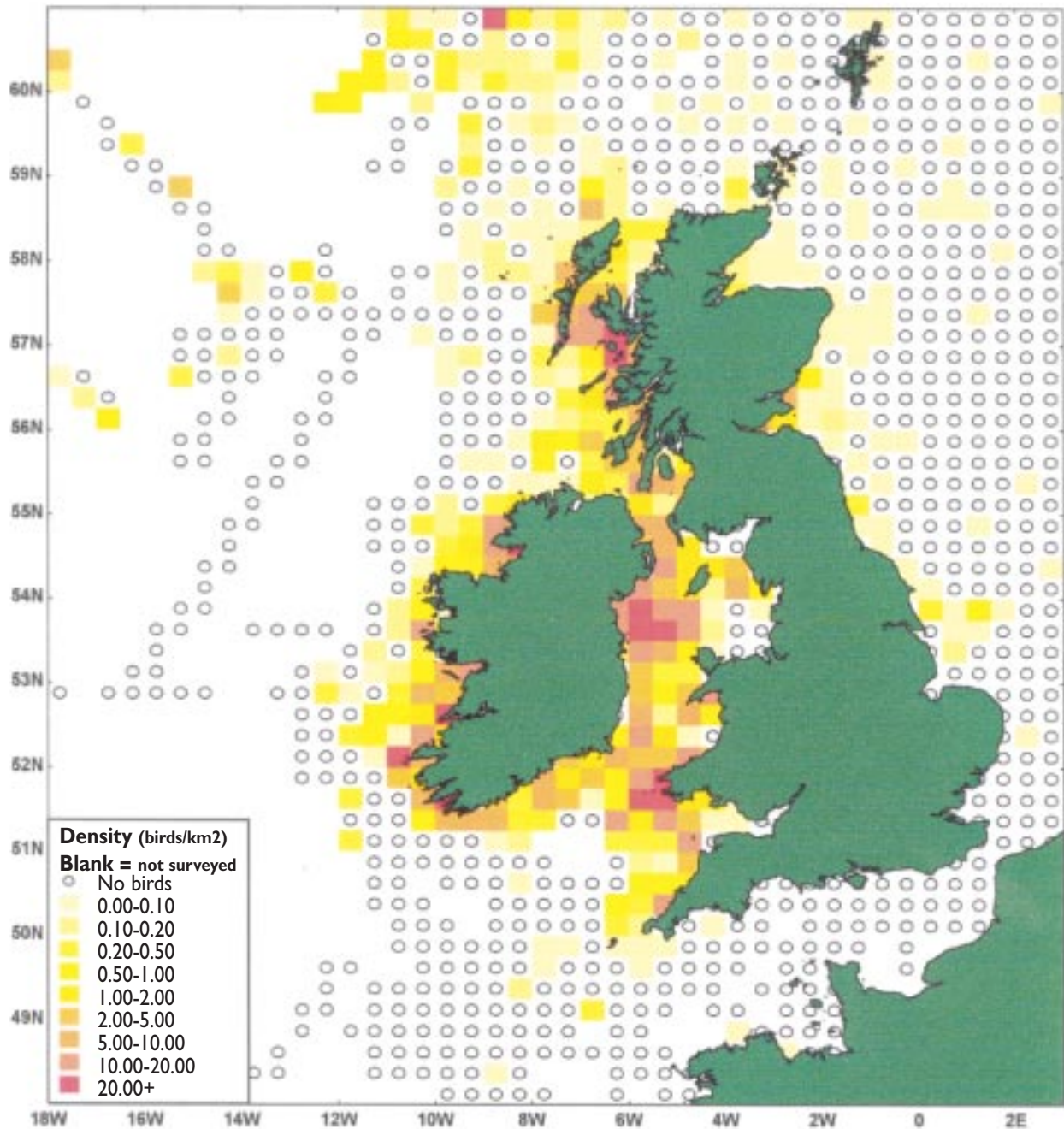
Copyright: © 2003 The DataStore & Bartholomew Ltd.
Acknowledgments: Data obtained from Digital Map Data © 2003 The DataStore & Bartholomew Ltd; additional data collated by BMT Cordah.

Map version & date
Version 1 18/11/2003



Irish Sea Pilot

Manx Shearwater distribution in July and August

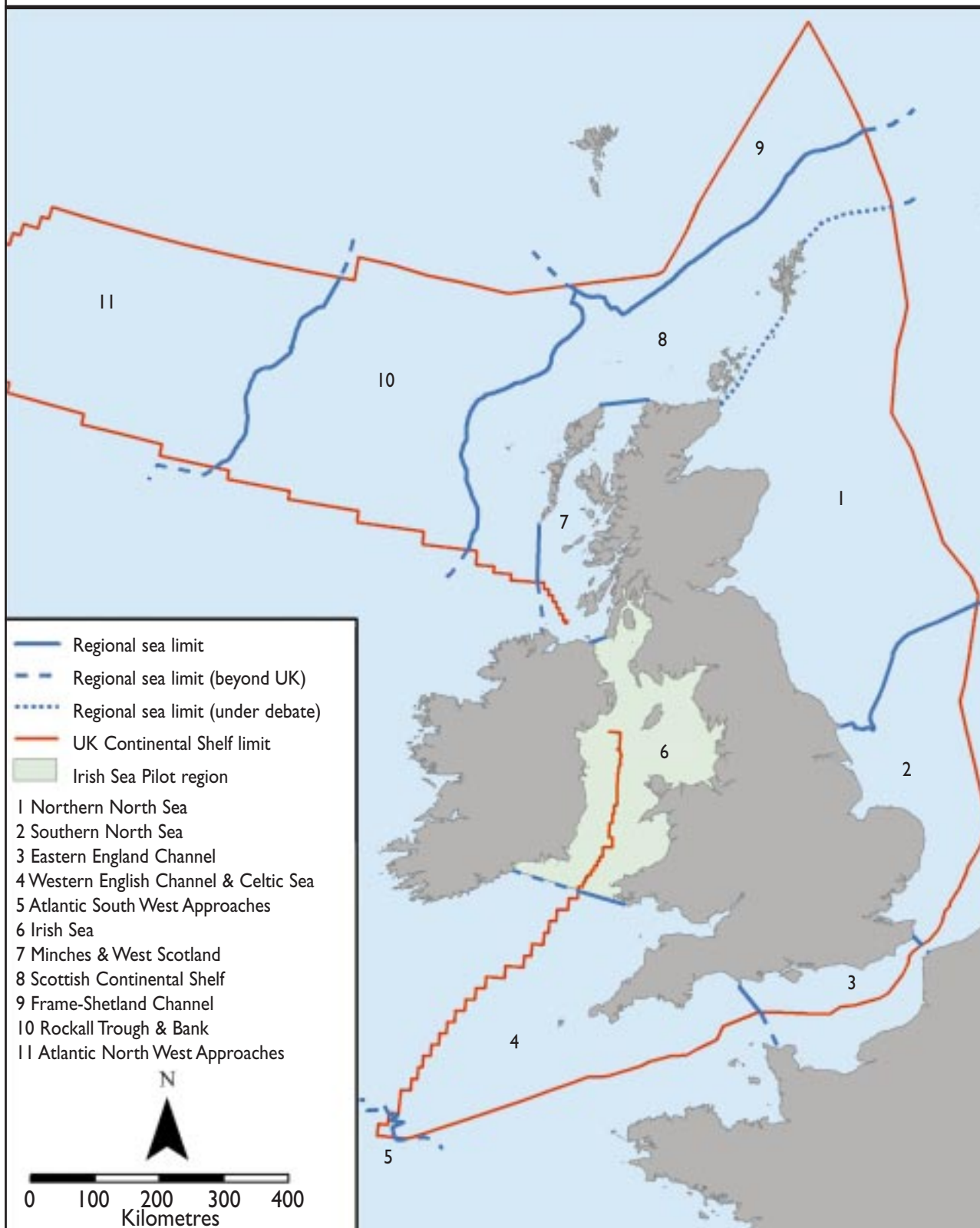


Copyright: JNCC / © Crown copyright. All rights reserved JNCC 100017955, 2004
Acknowledgements: Data supplied by JNCC.

Map version & date
Version I 20/11/2003



Irish Sea Pilot Draft Regional Seas



Copyright: JNCC / © Crown copyright. All rights reserved JNCC 100017955, 2004

Acknowledgements: World Vector Shoreline © US Defence Mapping Agency.

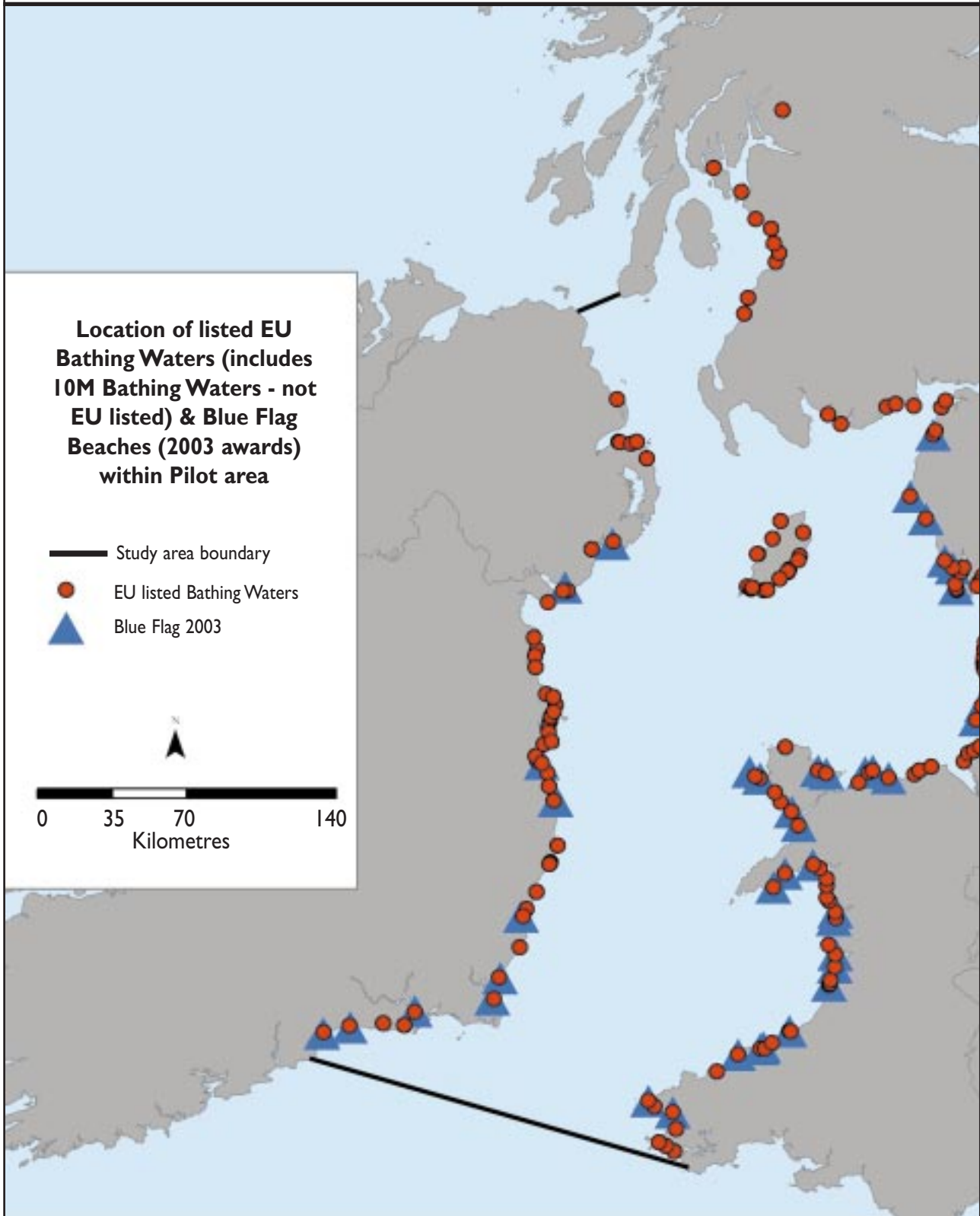
The exact limits of the UK Continental Shelf are set out in orders made under section 1(7) of the Continental Shelf Act 1964 (Crown Copyright).

Map version & date

Version 1 18/11/2003



Irish Sea Pilot EU Bathing Waters and Blue Flag Beaches



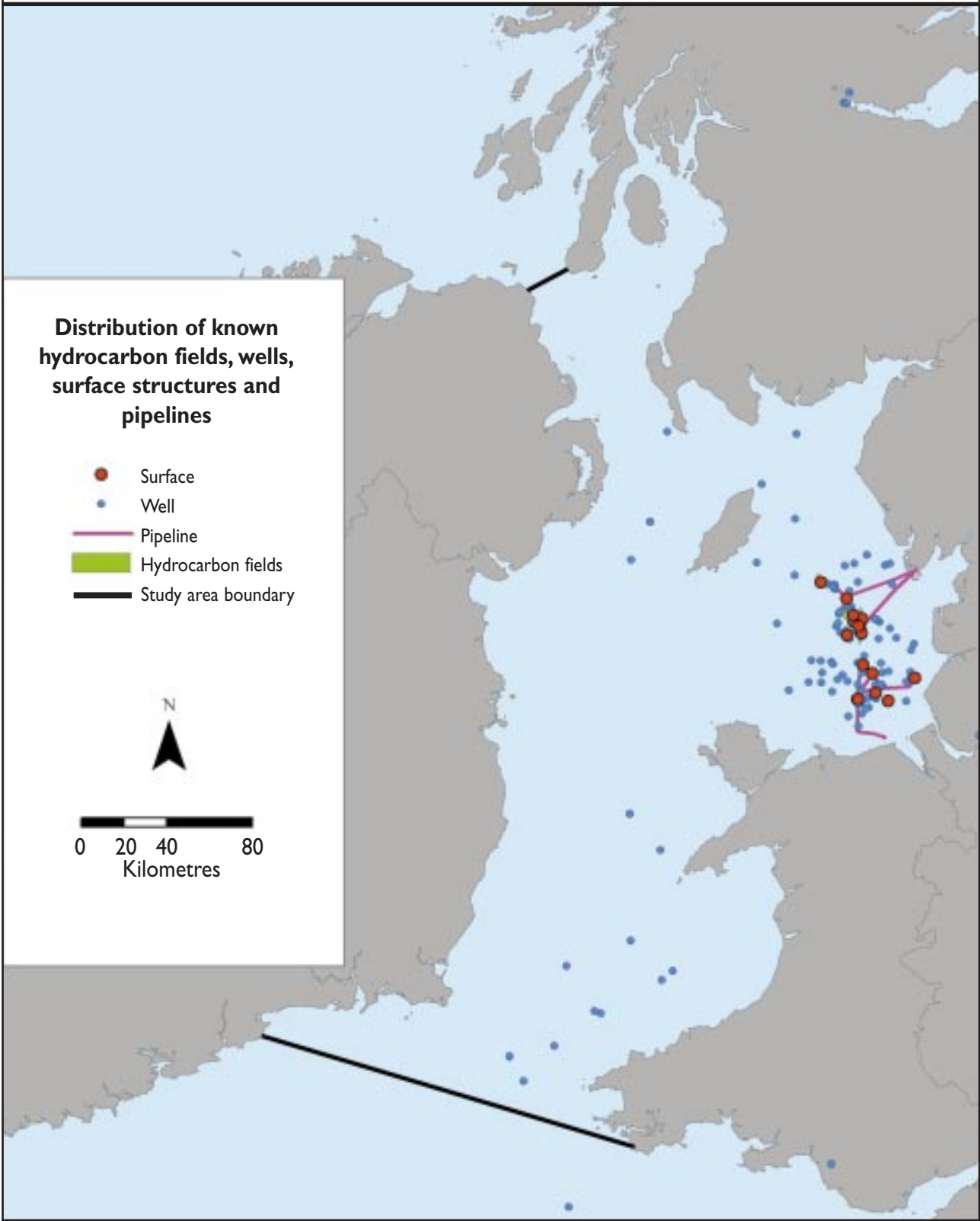
Copyright: © Crown copyright. All rights reserved JNCC 100017955, 2004
Acknowledgments: Data supplied by Environment Agency, Scottish Environment Protection Agency, Department of the Environment Northern Ireland, Environmental Protection Agency, Department of Local Government and the Environment, Encams, An Taisce.

Map version & date
Version I 26/01/2004



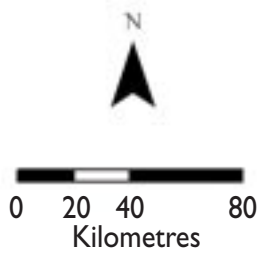
Irish Sea Pilot

Map of oil and gas activity



Distribution of known hydrocarbon fields, wells, surface structures and pipelines

- Surface
- Well
- Pipeline
- Hydrocarbon fields
- Study area boundary

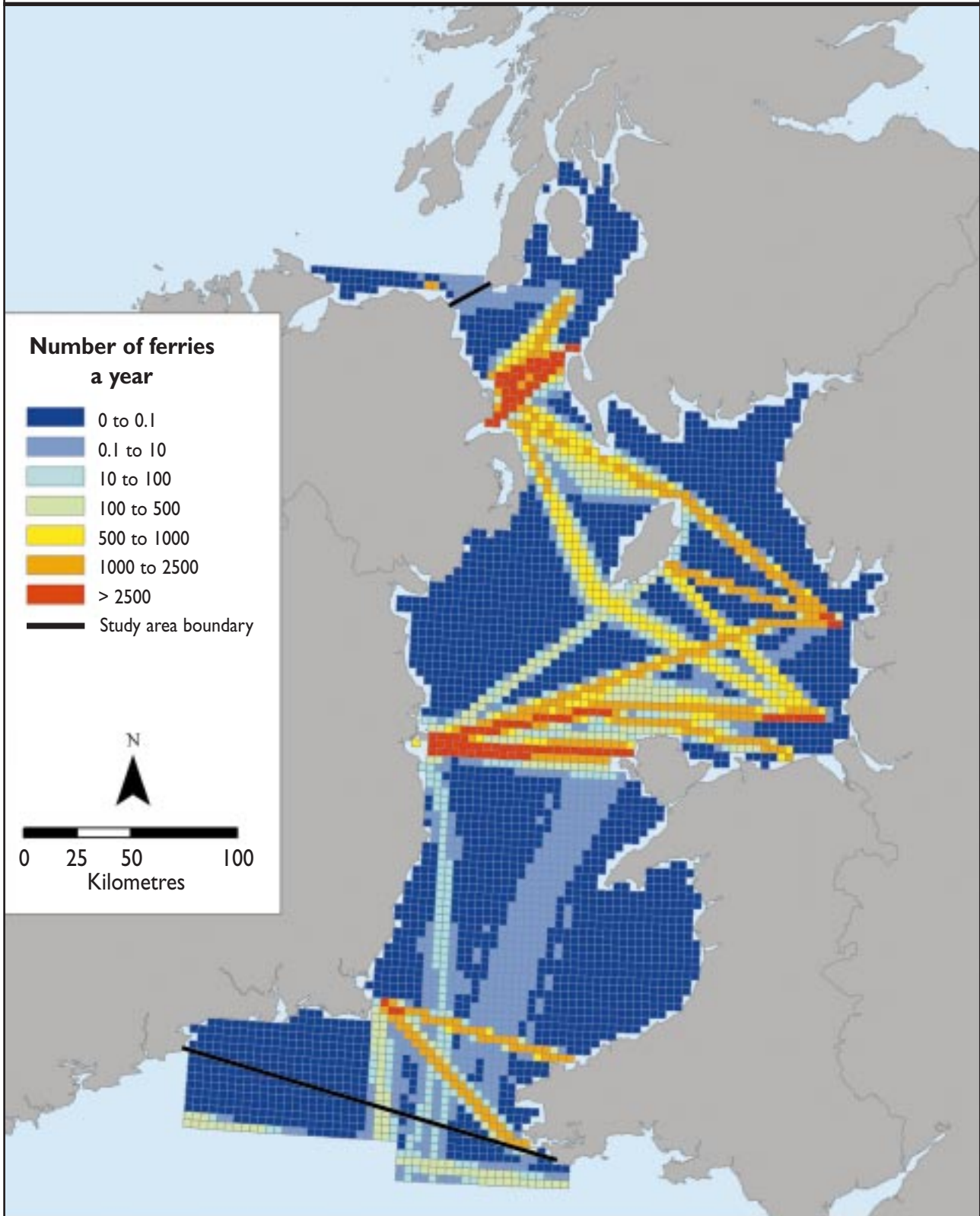


Copyright: © Crown copyright. All rights reserved JNCC 100017955, 2004
Acknowledgments: Data obtained from UK Digital Energy Atlas Library website.

Map version & date
Version 1 27/11/2003



Irish Sea Pilot Shipping: ferries

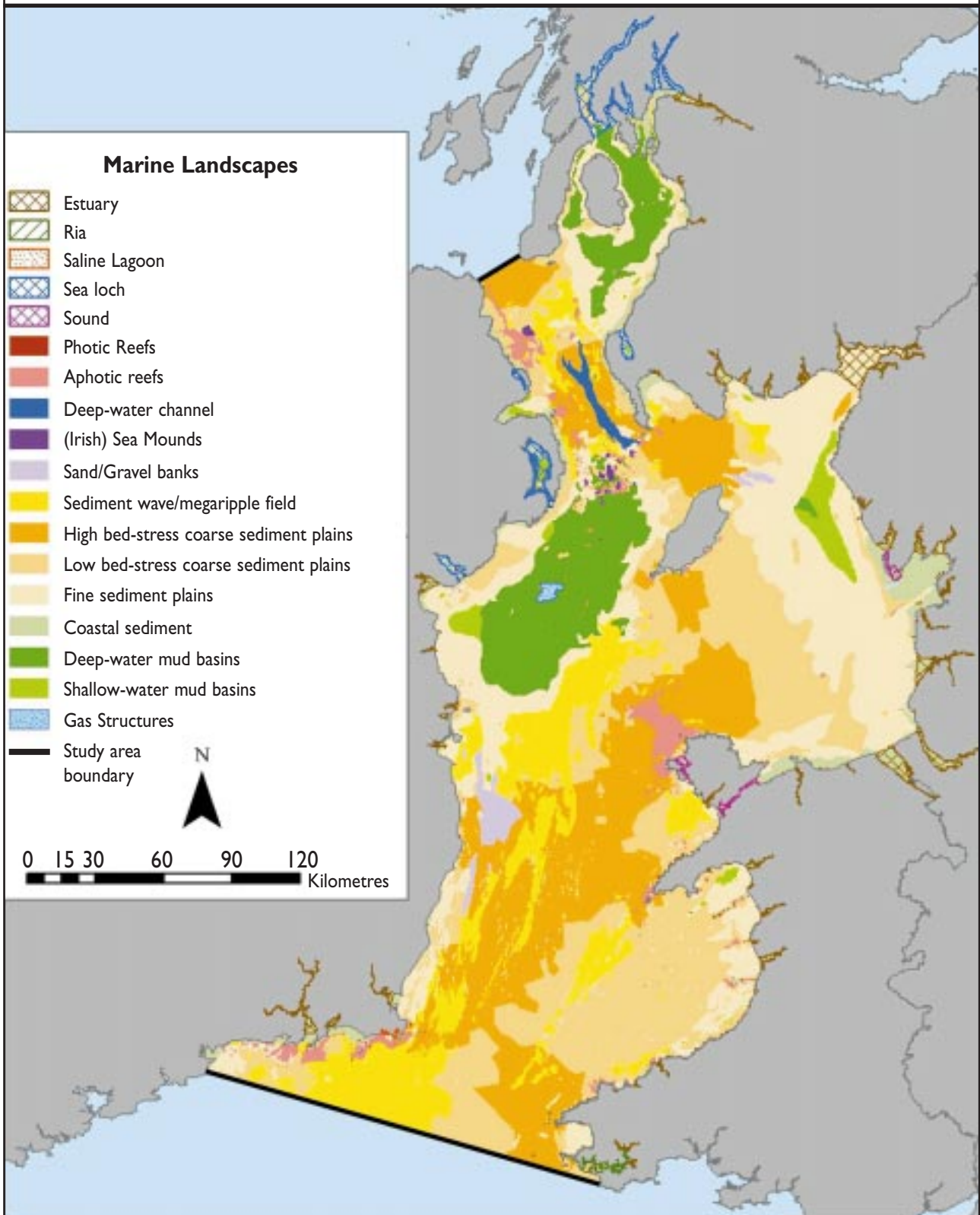


Copyright: Anatec UK Limited / © Crown copyright. All rights reserved JNCC 100017955, 2004
Acknowledgements: Data supplied by Anatec UK Limited

Map version & date
Version I 1/03/2003



Irish Sea Pilot Marine Landscapes



Copyright: © Crown copyright. All rights reserved JNCC 100017955, 2004
 Acknowledgments: Raw data from various sources; processed by Neil Golding & Mike Webster, JNCC

Map version & date
 Version 4 22/08/2003

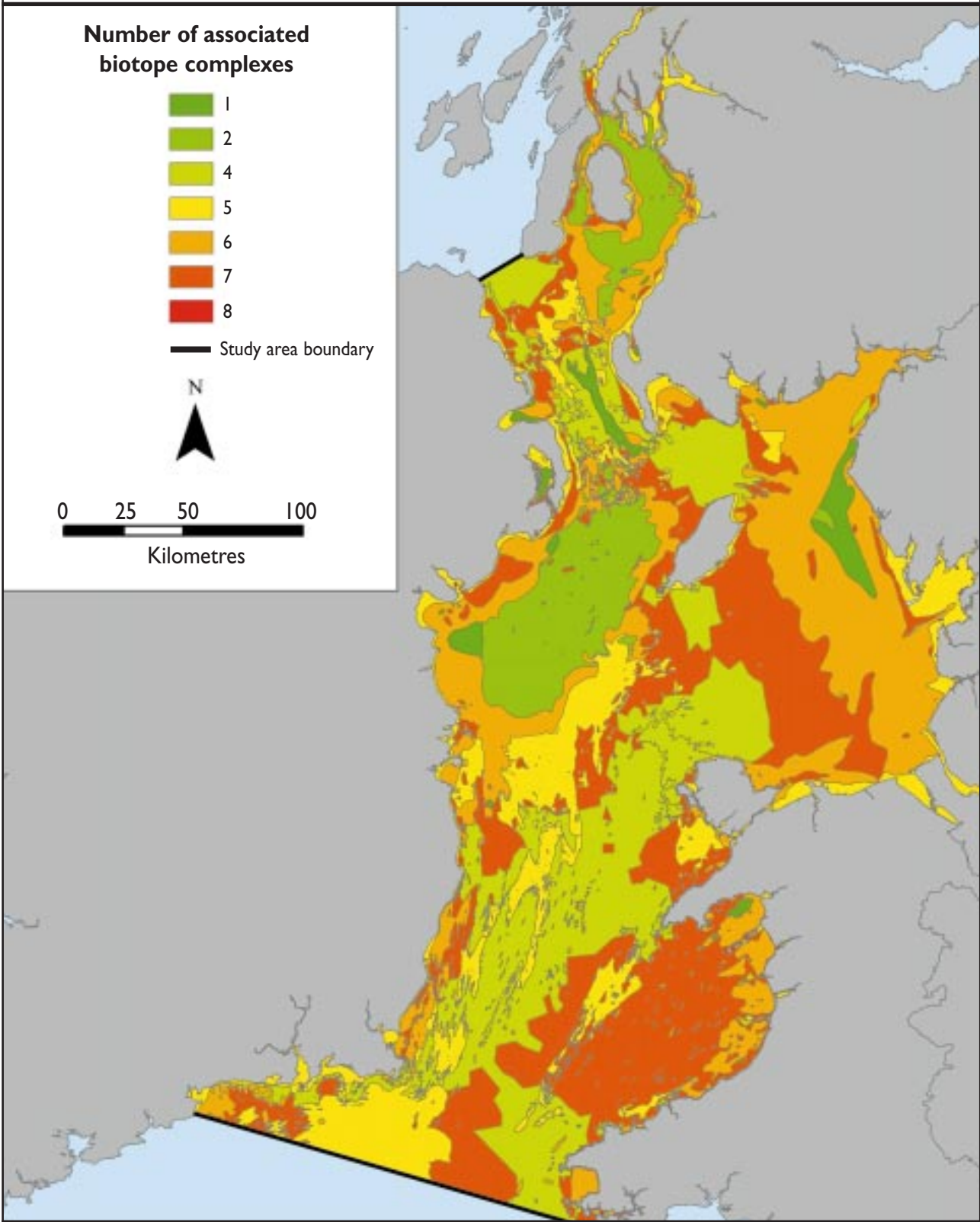
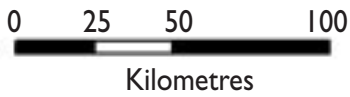


Irish Sea Pilot Marine Landscapes showing number of associated biotope complexes

Number of associated
biotope complexes



— Study area boundary

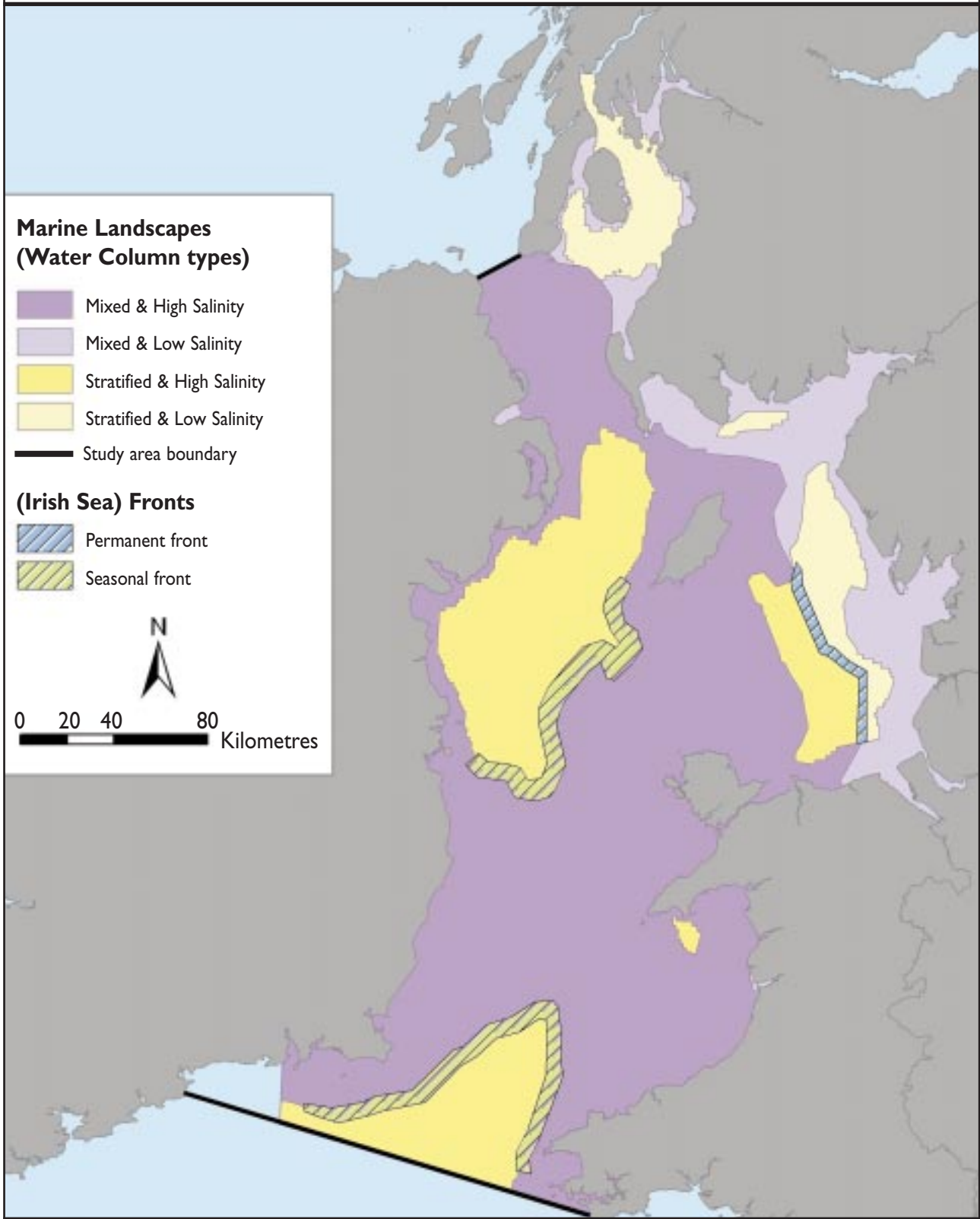


Copyright: © Crown copyright. All rights reserved JNCC 100017955, 2004
Acknowledgments: Raw data from various sources; processed by Neil Golding & Mike Webster, JNCC

Map version & date
Version 4 22/08/2003



Irish Sea Pilot Marine Landscapes (Water Column types)



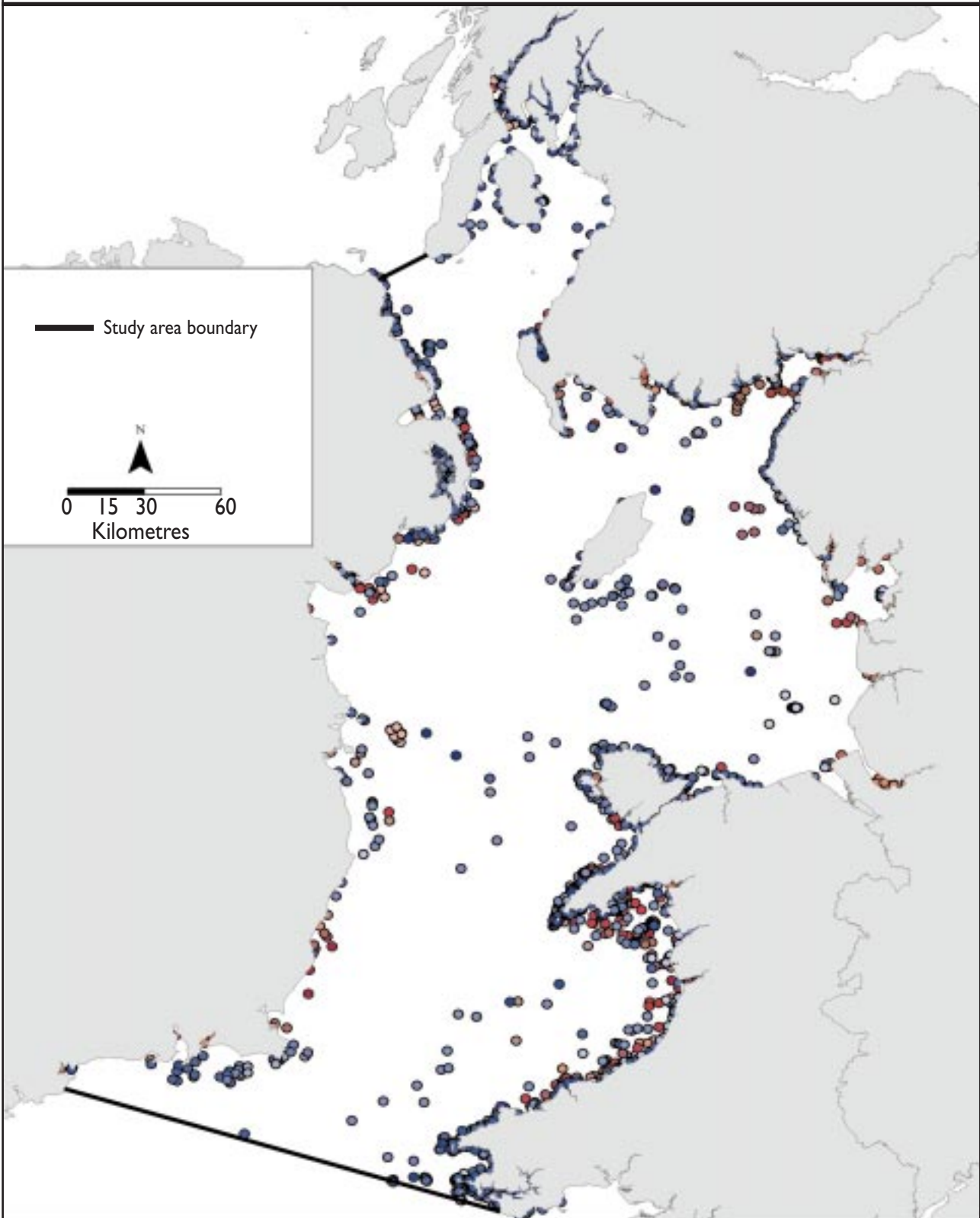
Copyright: Proudman Oceanographic Laboratory © NERC / © Crown copyright. All rights reserved JNCC 100017955, 2004
Acknowledgments: Data supplied by Proudman Oceanographic Laboratory; interpolated and converted by JNCC.

Map version & date
Version 1 24/11/2003



Irish Sea Pilot

Records of provisionally important benthic and algal species (blue dots) and habitats (red dots)



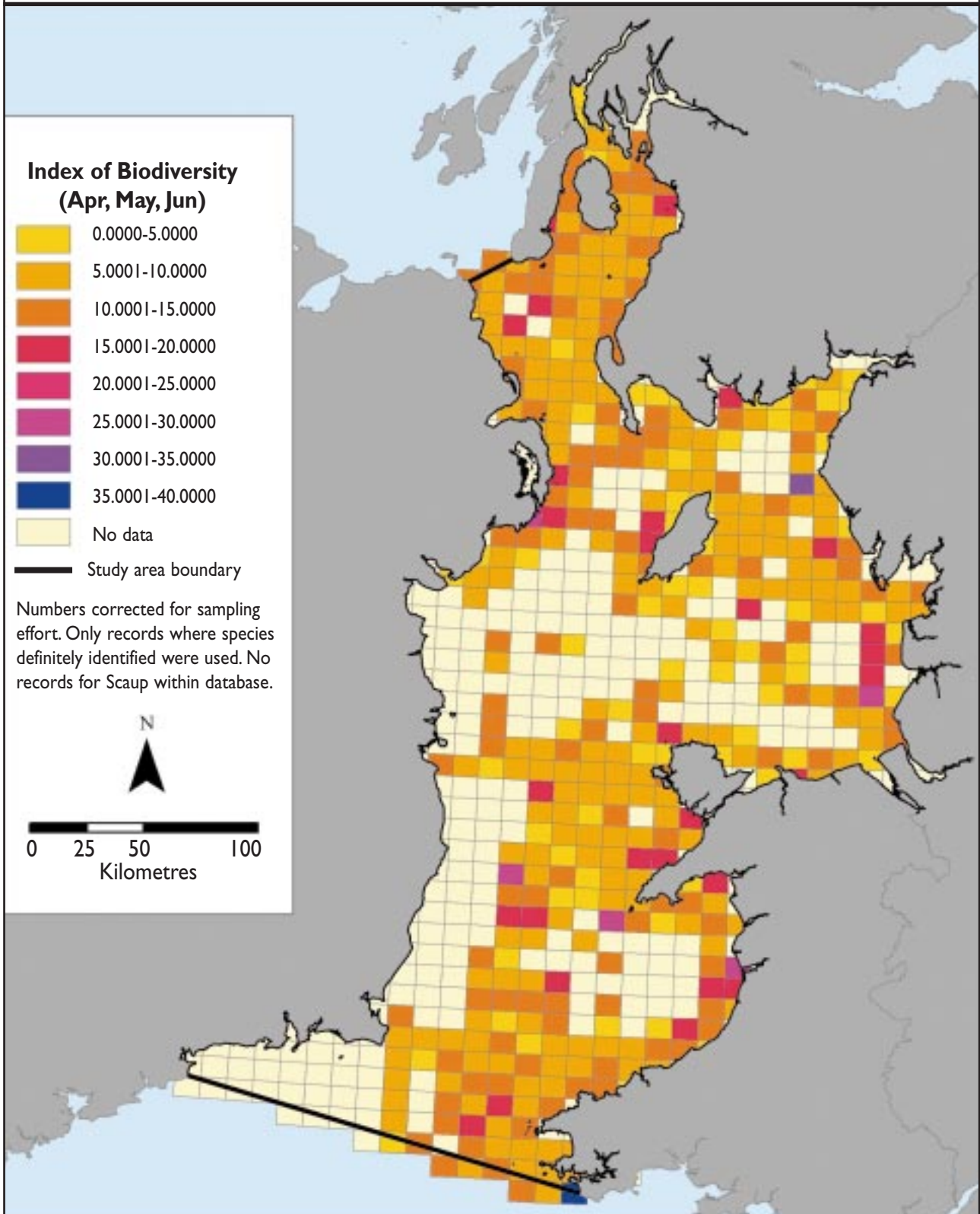
Copyright: JNCC / © Crown copyright. All rights reserved JNCC 100017955, 2004
Acknowledgments: Data from various sources.

Map version & date
Version I 20/11/2003



Irish Sea Pilot

Spring Seabird hotspots based on 5' by 10' grid (Sum of nationally important species)

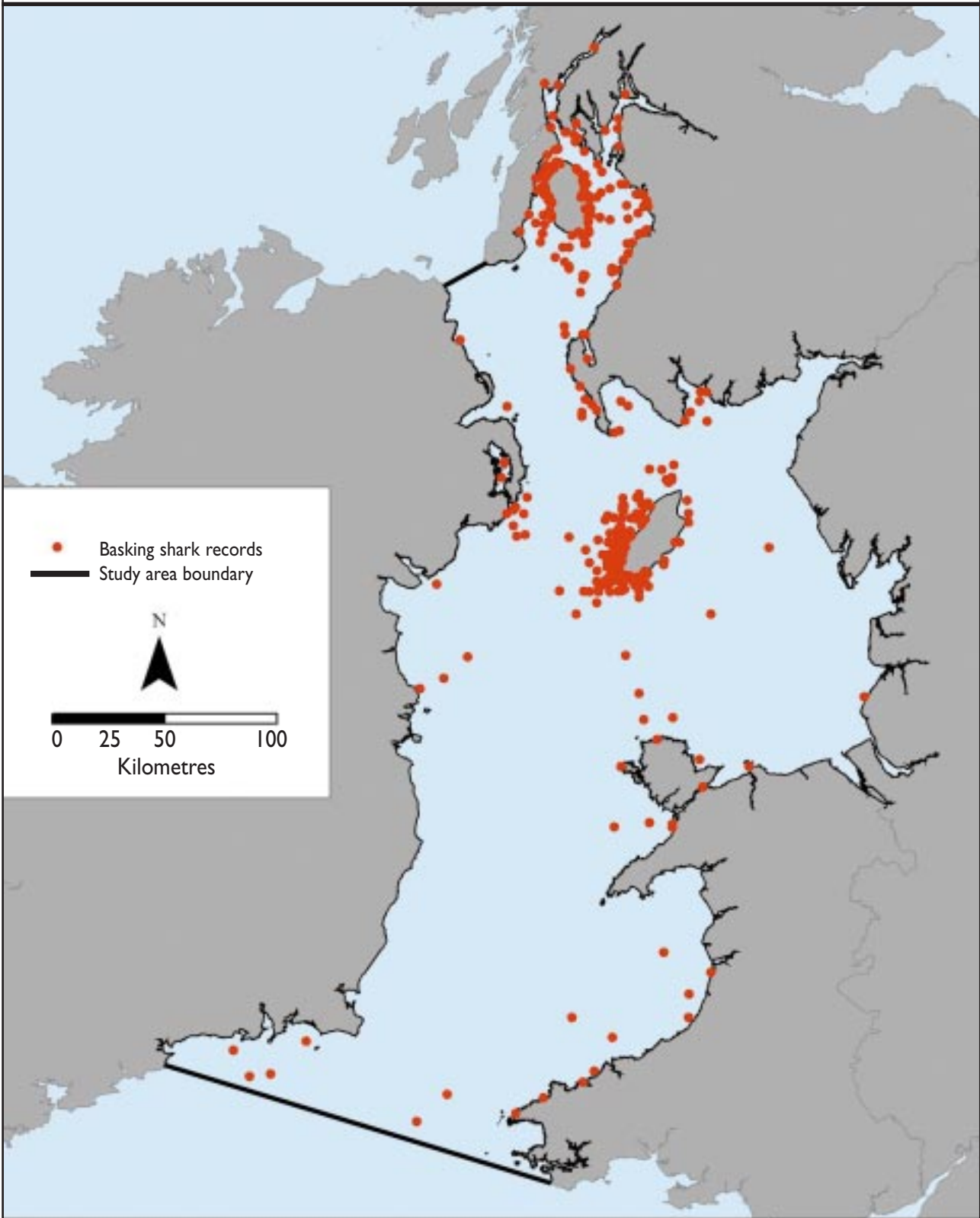


Copyright: JNCC / © Crown copyright. All rights reserved JNCC 100017955, 2004

Map version & date
Version 1 16/06/2003



Irish Sea Pilot Location of Basking Shark sightings

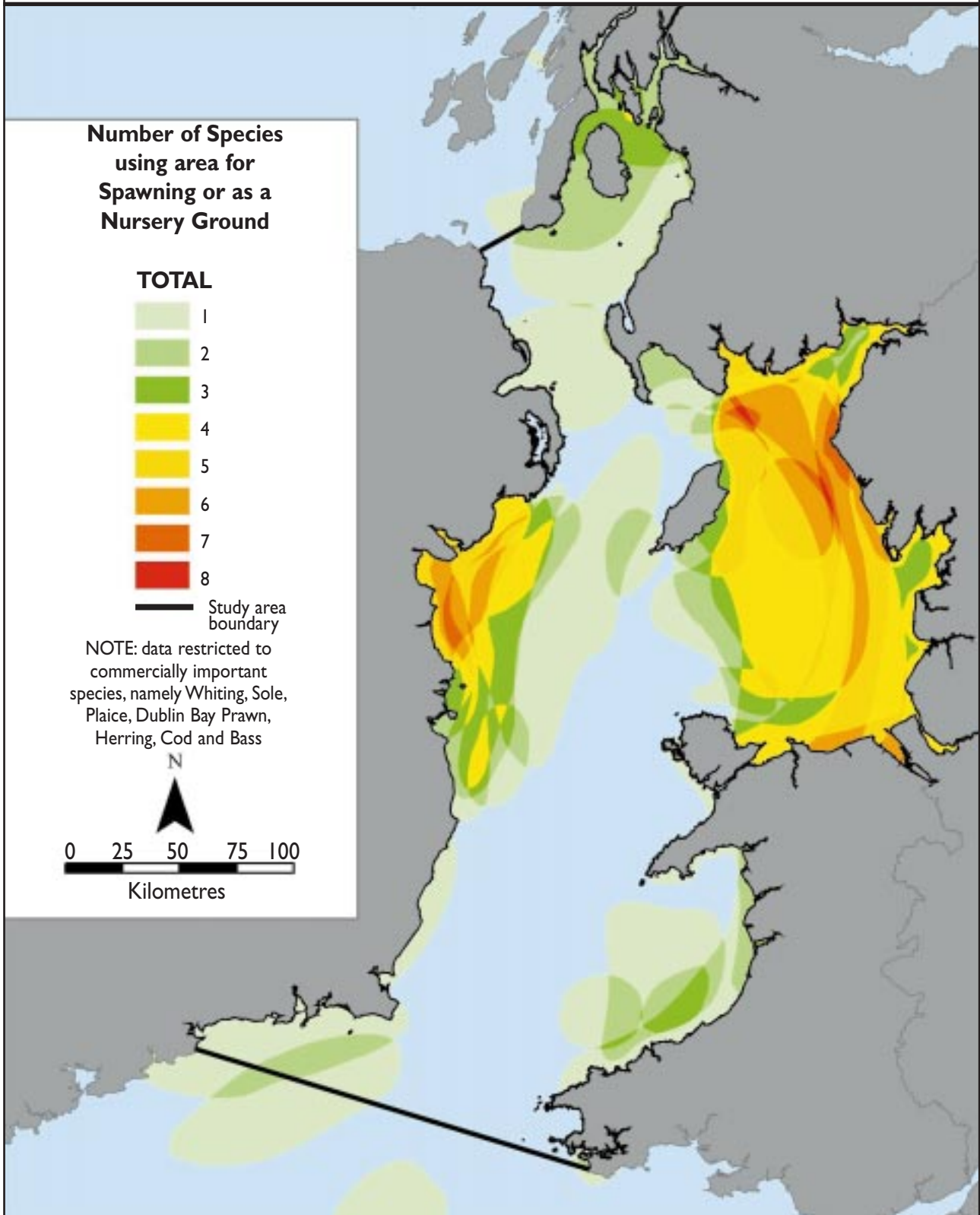


Copyright: Marine Conservation Society & JNCC / © Crown copyright. All rights reserved JNCC 100017955, 2004
Acknowledgements: Data supplied and mapped by JNCC & Marine Conservation Society; clipped by JNCC

Map version & date
Version 2 3/09/2003



Irish Sea Pilot Nursery and Spawning Grounds for Commercially Important Fish



Copyright: © Crown copyright. All rights reserved JNCC 100017955, 2004
Acknowledgements: Data supplied by Centre for Environment Fisheries and Aquaculture Science and Fisheries Research Services; interpreted by JNCC

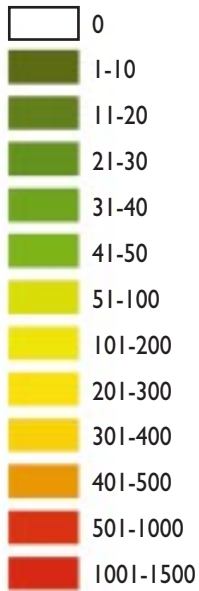
Map version & date
Version 1 20/11/2003



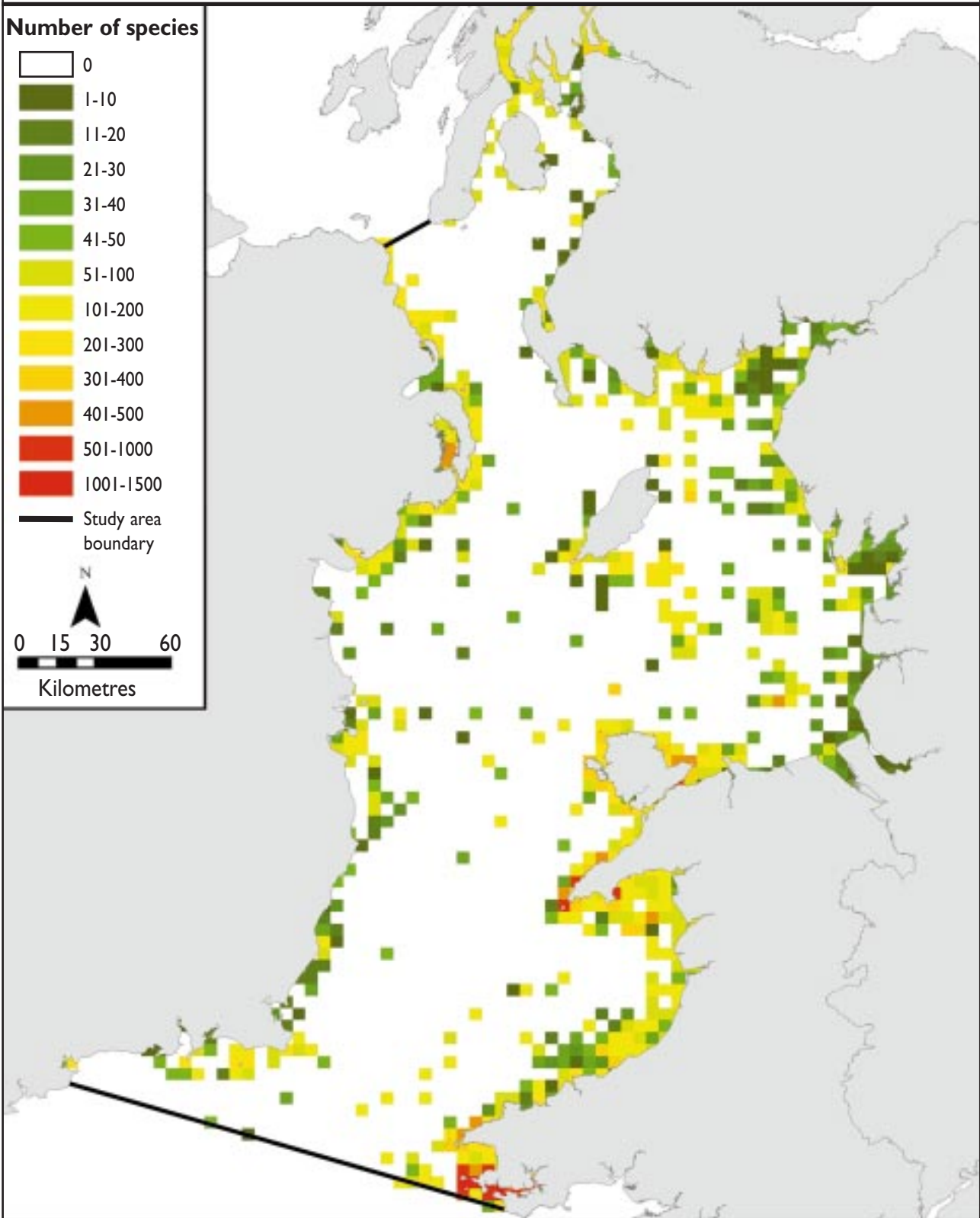
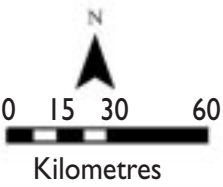
Irish Sea Pilot

Numbers of benthic species recorded in 5km by 5km grid cells

Number of species



Study area boundary



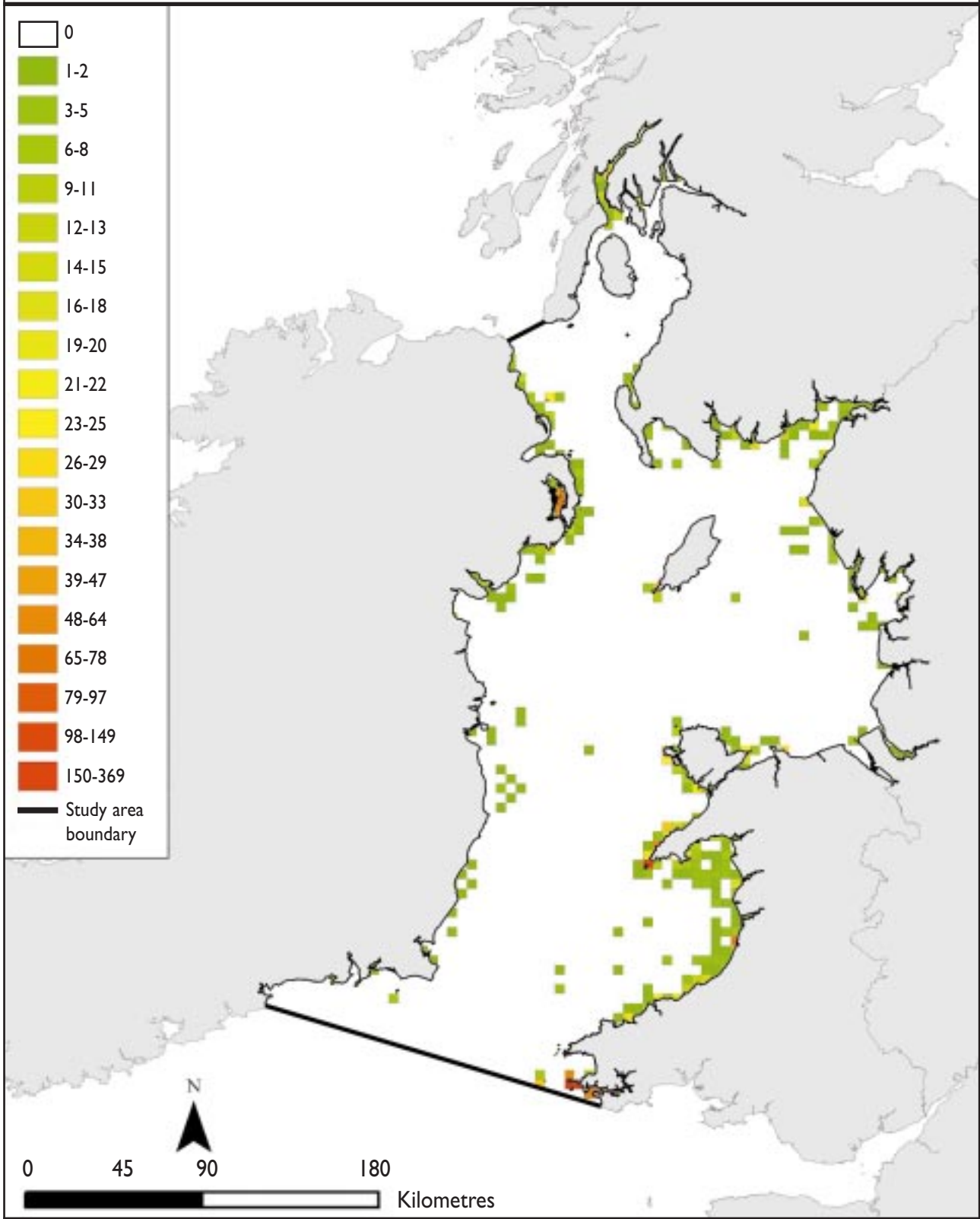
Copyright: JNCC / © Crown copyright. All rights reserved JNCC 100017955, 2004
Acknowledgements: Data from various sources

Map version & date
Version I 20/11/2003



Irish Sea Pilot

Numbers of provisionally nationally important habitats and benthic species recorded in 5km by 5km grid cells



Copyright: JNCC / © Crown copyright. All rights reserved JNCC 100017955, 2004
 Acknowledgments: Data from various sources.

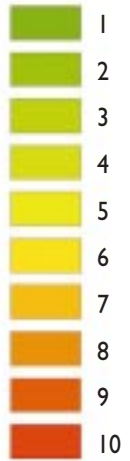
Map version & date
 Version 2 26/01/2004



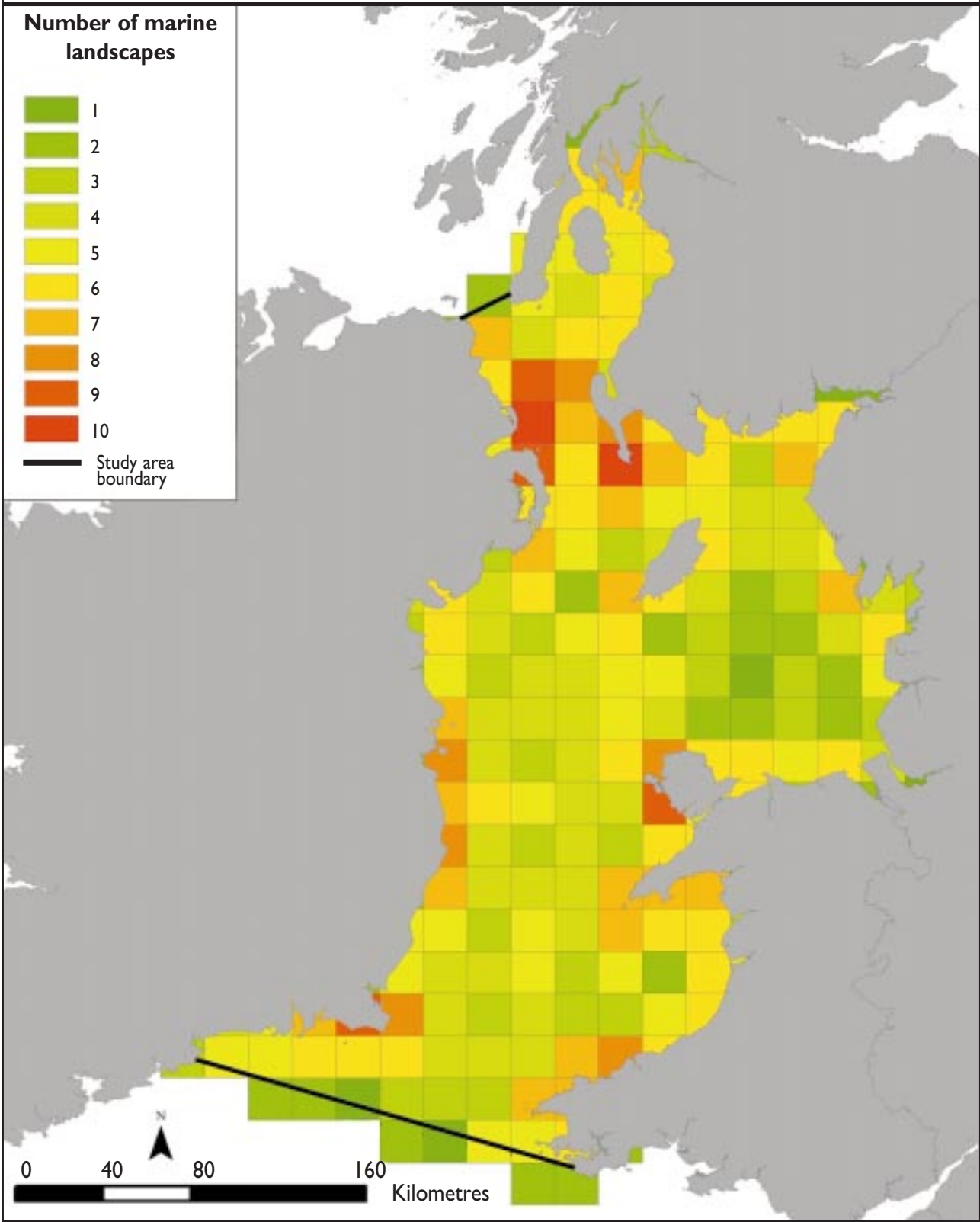
Irish Sea Pilot

Number of Marine Landscapes occurring within 20 by 20km grid cells

Number of marine landscapes



Study area boundary

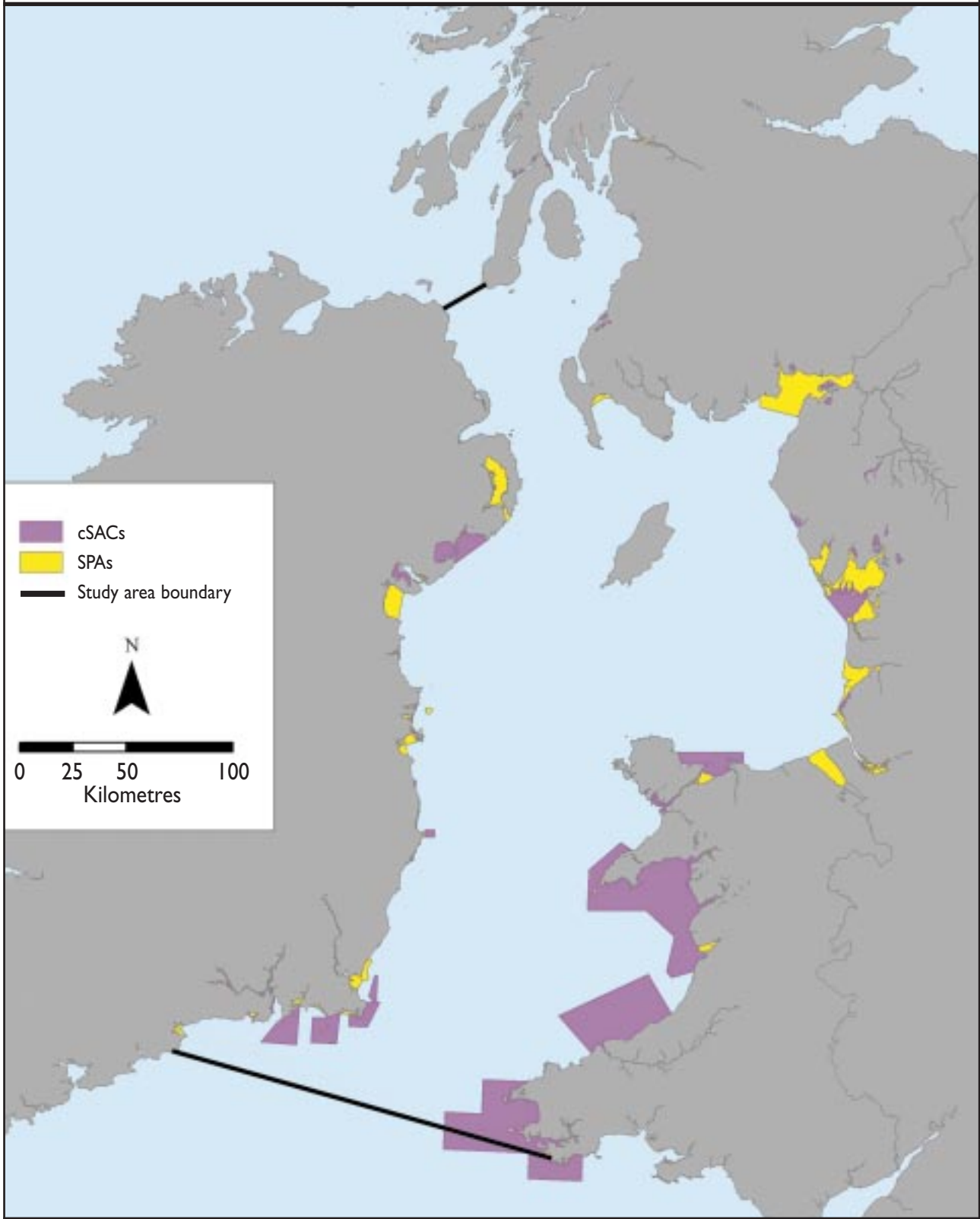


Copyright: JNCC / © Crown copyright. All rights reserved JNCC 100017955, 2004

Map version & date
Version I 31/10/2003



Irish Sea Pilot Special Protection Areas (SPAs) and candidate Special Areas of Conservation (cSACs)



Copyright: JNCC / © Crown copyright. All rights reserved JNCC 100017955, 2004

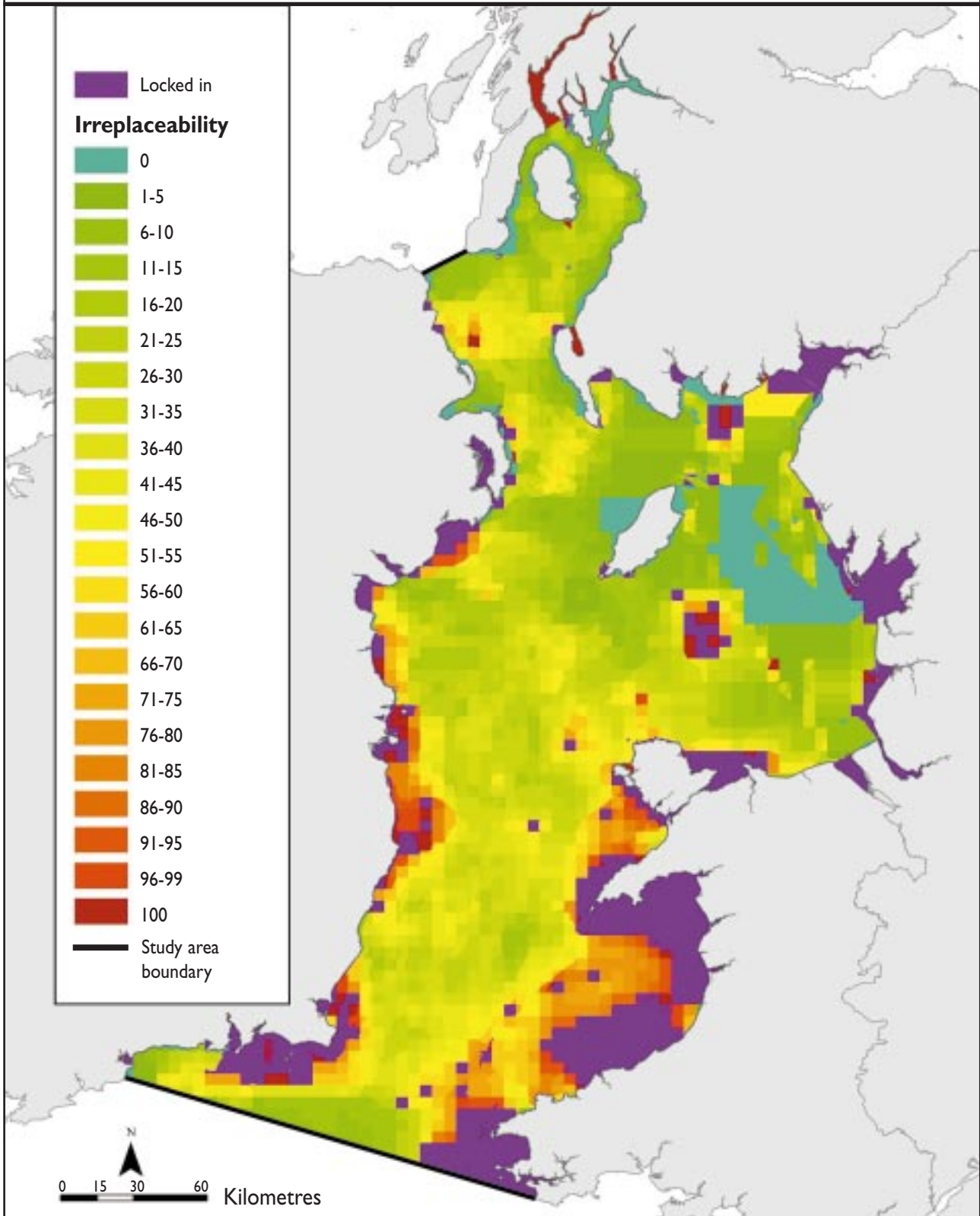
Acknowledgement: Data supplied by English Nature, Scottish Natural Heritage, Countryside Council for Wales & Duchas; clipped by JNCC

Map version & date
Version 1 17/03/2003



Irish Sea Pilot

Irreplaceability: locking in biodiversity, estuaries, SACs and SPAs with naturalness



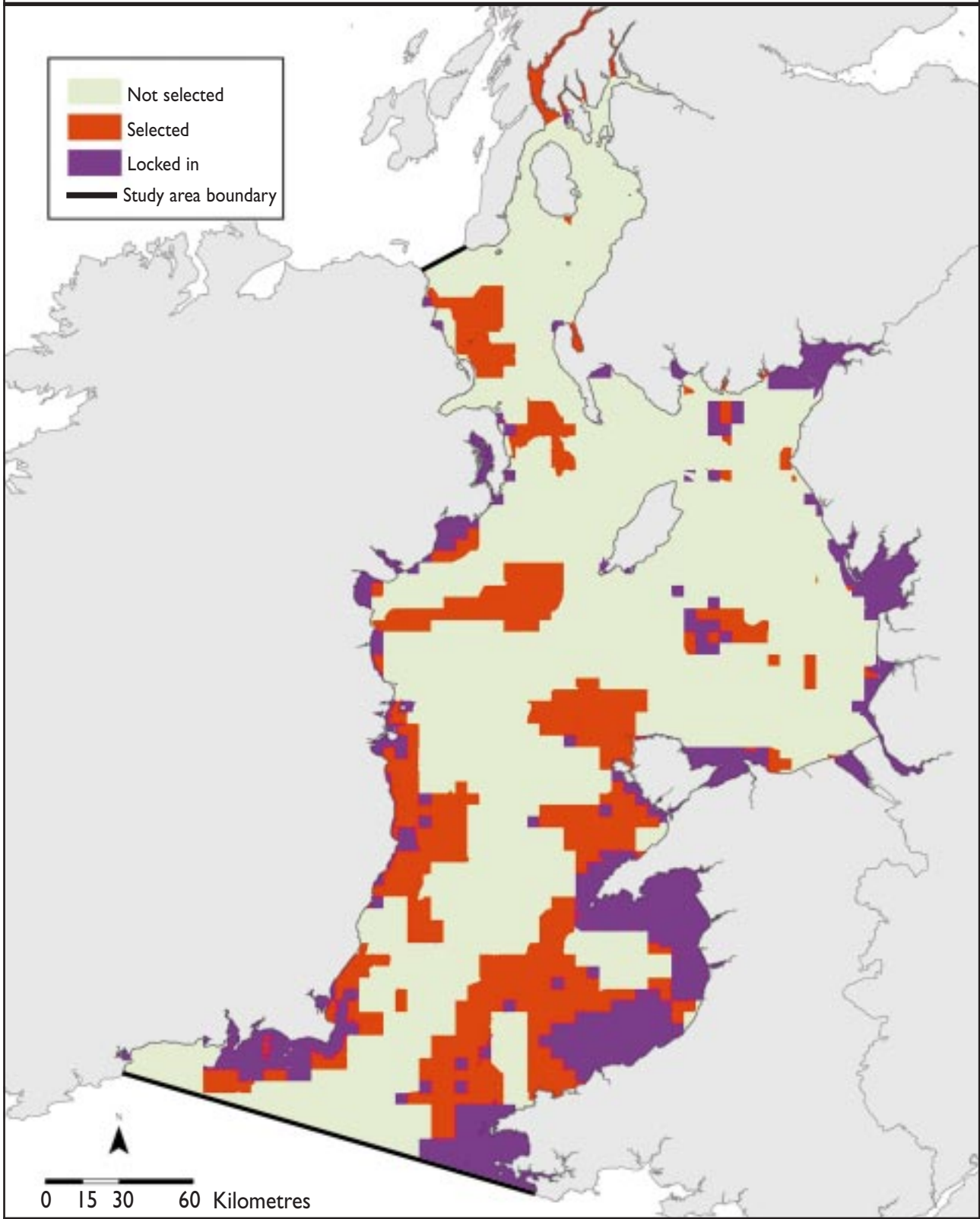
Copyright: JNCC / © Crown copyright. All rights reserved JNCC 100017955, 2004

Map version & date
Version I 27/01/2004



Irish Sea Pilot

“Best Solution”: Locking in biodiversity, estuaries, SACs and SPAs with naturalness



Copyright: JNCC / © Crown copyright. All rights reserved JNCC 100017955, 2004

Map version & date
Version 1 27/01/2004



▲ The honeycomb reef worm *Sabellaria alveolata* builds massive reef structures along some lower sandy shores. © JNCC.



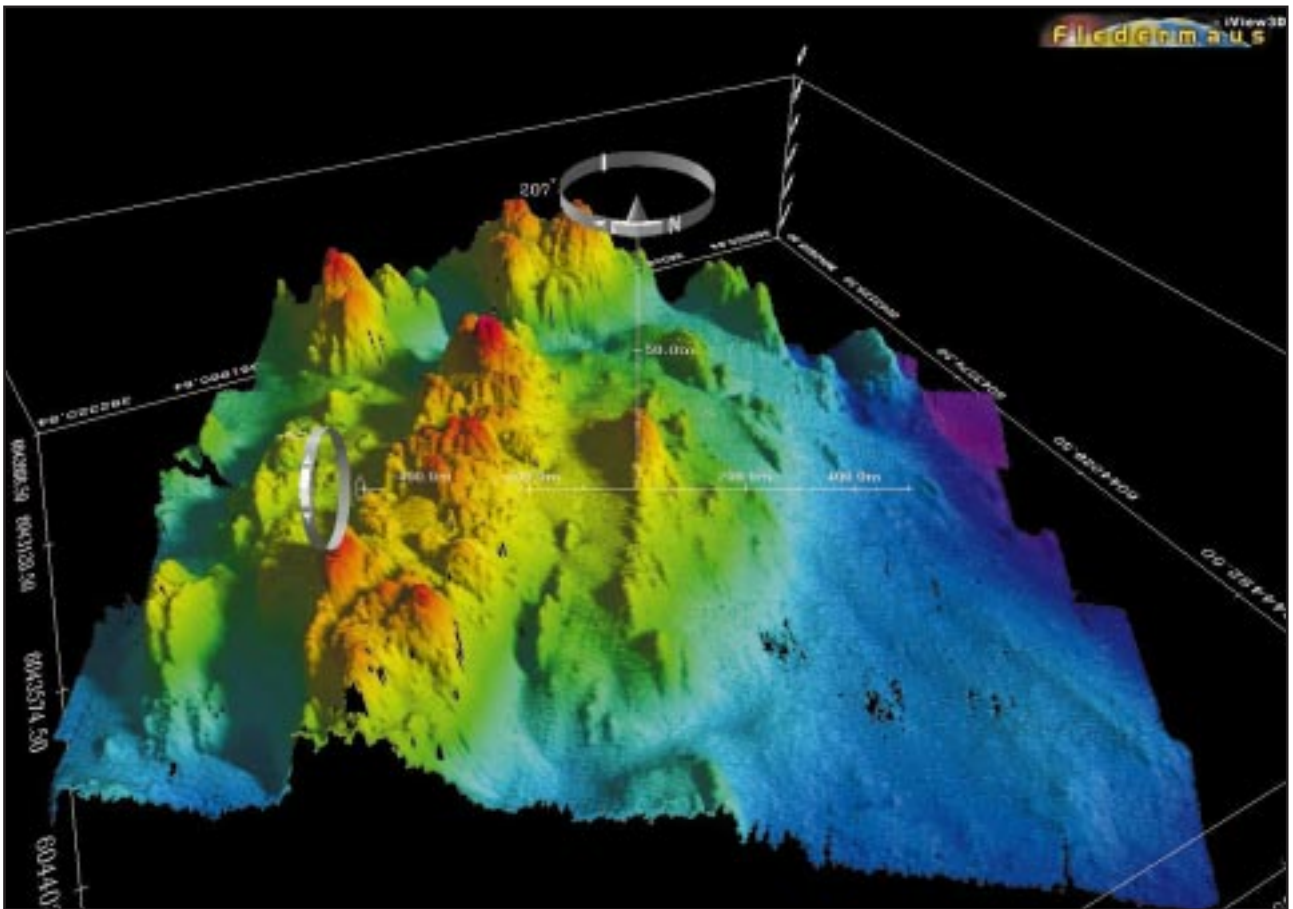
▲ A Dublin Bay prawn *Nephrops norvegicus* in its burrow in the Deep water mud basin marine landscape. © Chris Lumb/JNCC.



▲ Dense horse mussel *Modiolus modiolus* beds form species-rich habitats in scattered localities in the northern Irish Sea. © Jon Davies



▲ Jewel anemones *Corynactis viridis* can form large multi-coloured sheets on rocky reefs below low water. © Maura Mitchell.



▲ A three-dimensional bathymetric image of the *Irish Sea mounds* marine landscape. This example rises from the seabed (130m deep) to within 50m of the surface (from RV Lough Foyle cruise). © Crown copyright.



▲ The UK population of bottlenose dolphins *Tursiops truncatus* numbers several hundred of which about half live in the Irish Sea, mainly in Cardigan Bay. © P.G.H. Evans



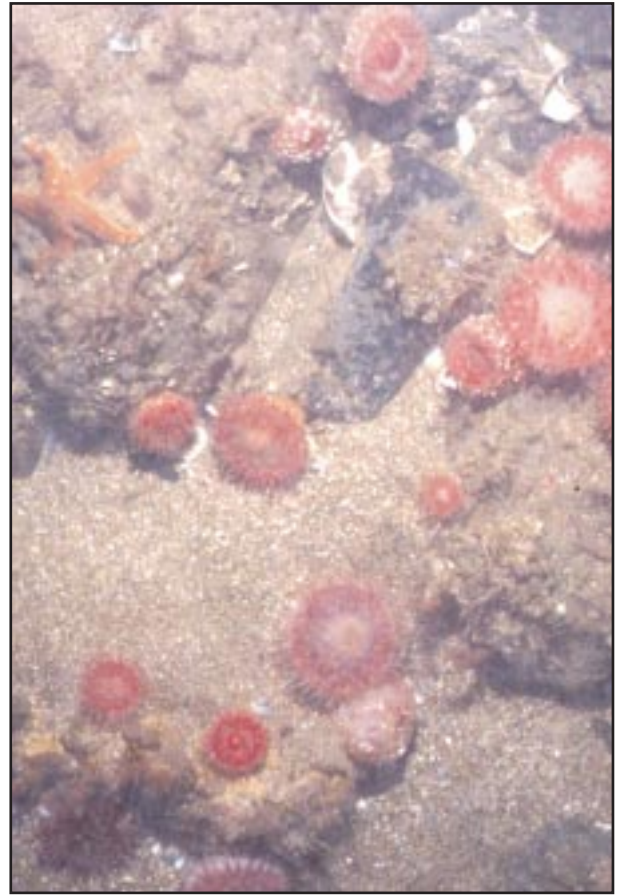
▲ Basking sharks *Cetorhinus maximus* grow to 10m in length. They filter plankton, taking advantage of productive near-surface waters, and occur regularly off the coasts of the Isle of Man and Arran. © Naturepl.com



▲ 80% of the world population of Manx shearwater *Puffinus puffinus* breed in the UK. The Pembrokeshire Islands hold important breeding colonies, with smaller colonies on islands off Co. Waterford and Co. Down. © Nature Photographers.



▲ Spider crabs *Inachus* sp. on rippled medium/fine sand, representing the *Sediment wave/megaripple field* marine landscape at 31m depth, Caernarfon Bay, Wales. © Crown copyright.



▲ Numerous dahlia anemones *Urticina* sp. on rock partly covered by sand, an example of the *Aphotic reef* marine landscape at 40m depth, north of Anglesey. © Crown copyright.



▲ Photosledge with still camera system (black housing) and video camera and lights (red plug retainers), used on the *RV Prince Madog* cruise. © Crown copyright.