

Delivering Grassland Management Through Local Grazing Schemes

Damian Offer

Grazing Project Officer



Hampshire
County Council



Delivering Grassland Management Through Local Grazing Schemes

1. The Grazing Animals Project
2. Local Grazing Schemes
3. Hampshire Grazing Project
4. Summary



Hampshire
County Council



1. The Grazing Animals Project

National partnership project with representatives from a wide range of partner organisations



Hampshire
County Council

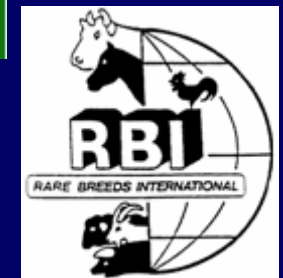


1. The Grazing Animals Project



Royal Agricultural College

Rural Development Service



1. The Grazing Animals Project

- Promote the role of appropriate grazing in the delivery of conservation objectives
- Encourage integrated, viable, sustainable land management solutions using grazing animals
- Facilitate networking and provide guidance
- Address constraints on conservation grazing
- Assist local delivery



Hampshire
County Council

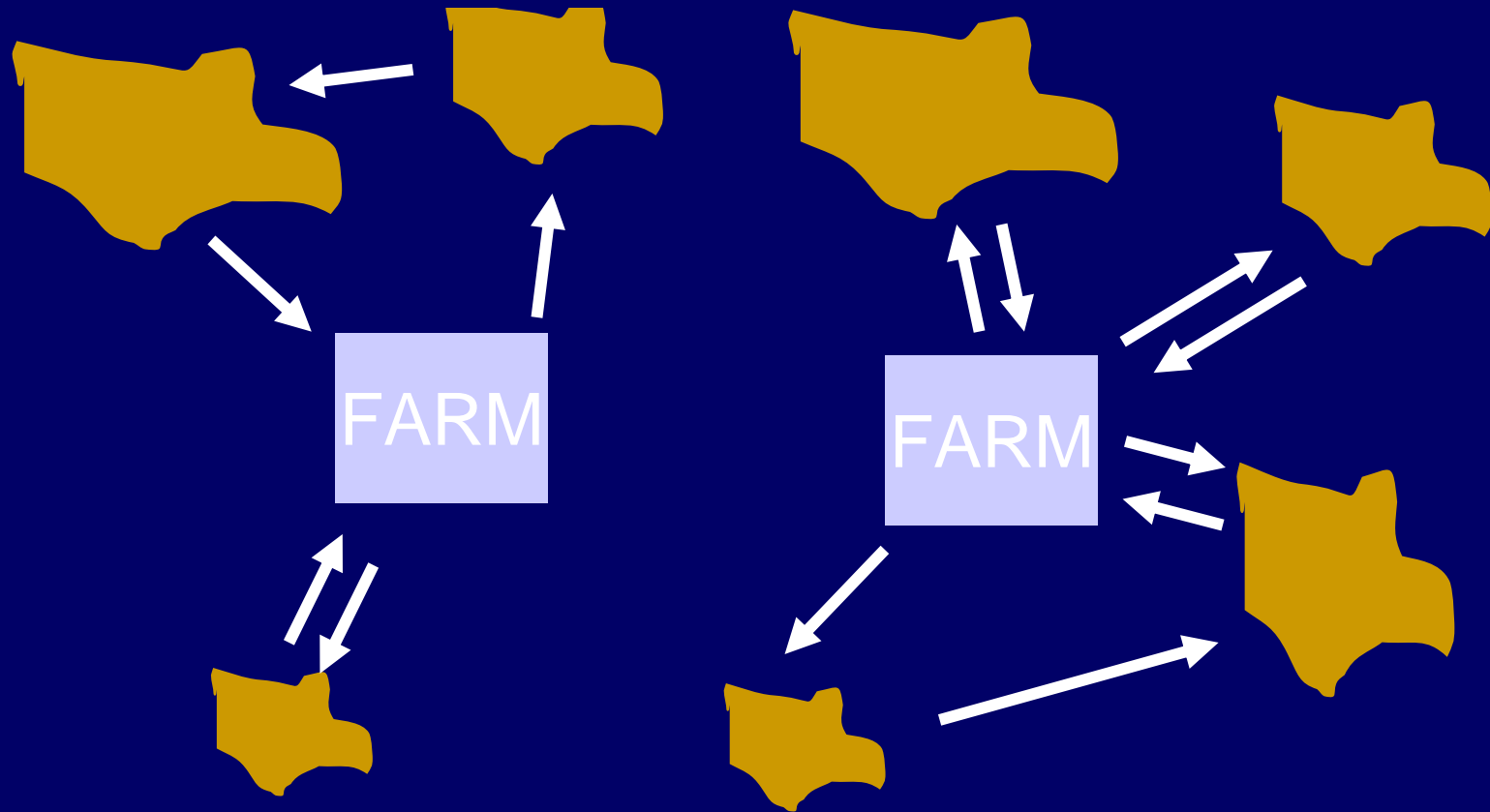


2. Local Grazing Schemes



- Developed to meet needs identified by GAP questionnaire
- Currently 33 projects in England and Wales
- Provide local solutions
- Overcome problems resulting from loss of livestock and reduction in extensive grazing

Extended Grazing Network



 Conservation site
 Stock movement
(Source: Bill Grayson, 1999)

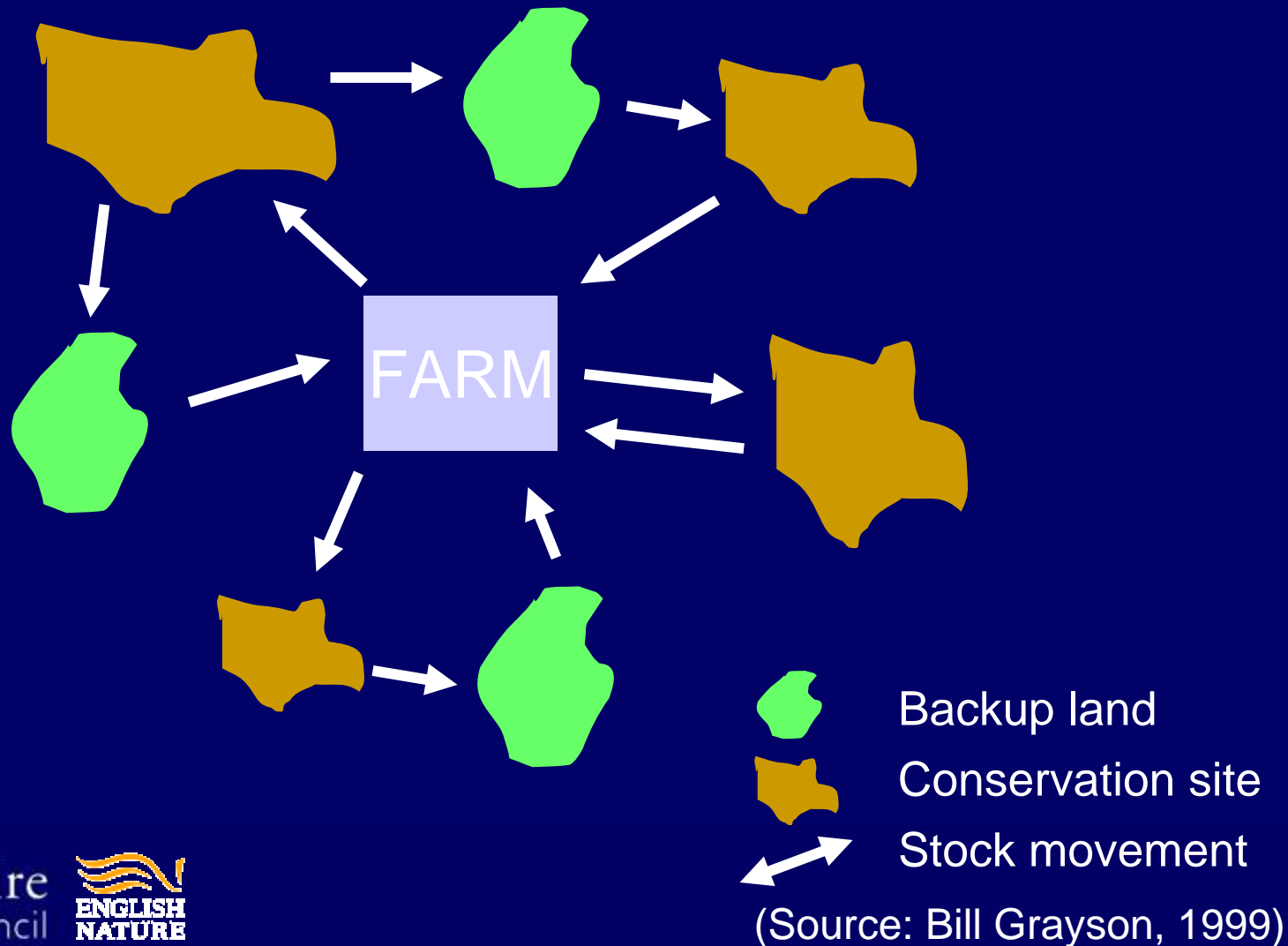
Castle Bottom (Extended Grazing Network)



- Heathland NNR in North Hampshire
- Local grazier with traditional breed cattle
- Site staff help with stock checking
- Grazier receives contribution to travel costs
- Grazier's stock also graze other heathland and wood pasture sites



Integrated Grazing Network



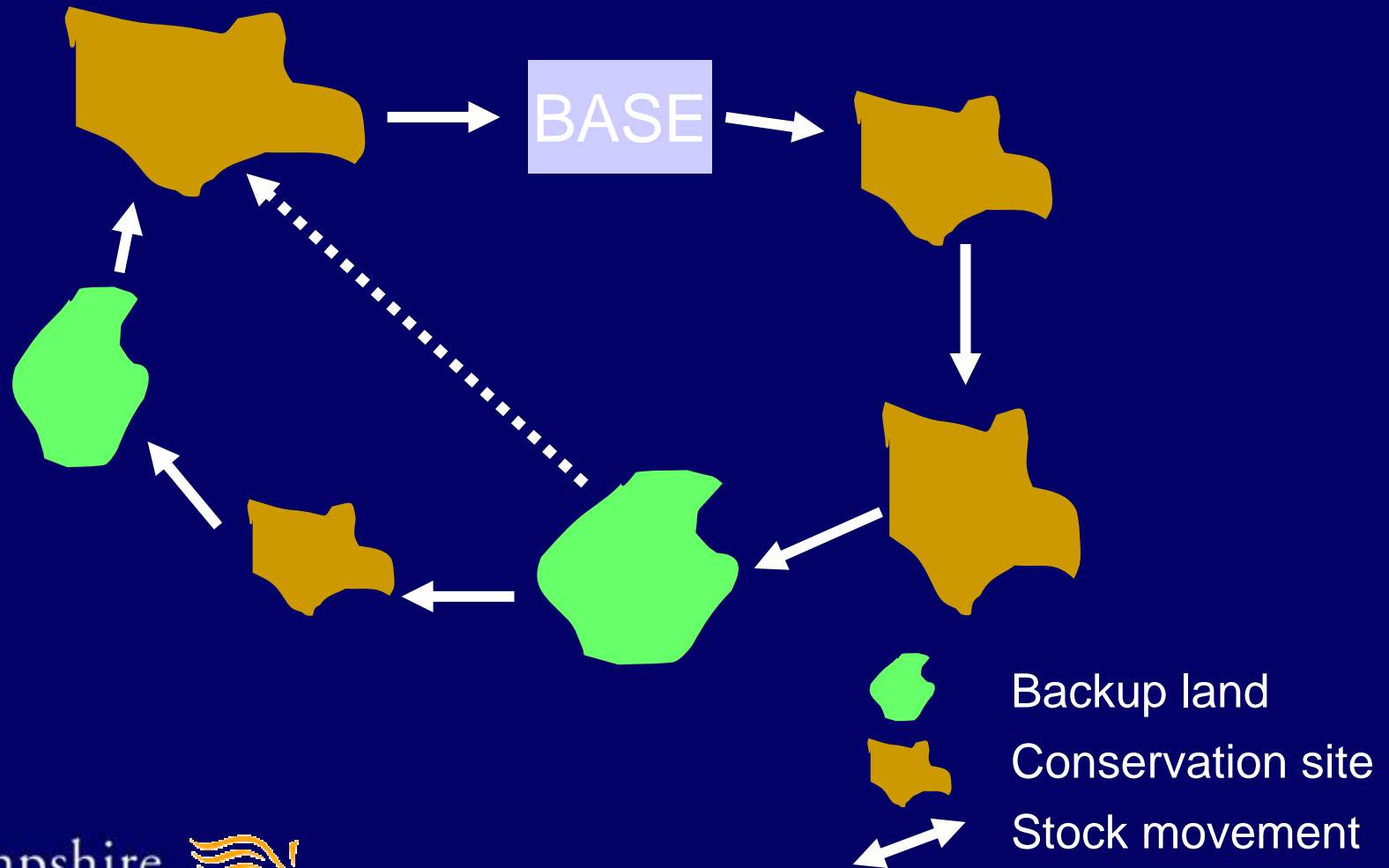
Dundridge (Integrated Grazing Network)



- SINC chalk down in south Hampshire – 7ha
- Associated backup land
- Grazier's Highland cattle herd also graze The Moors SSSI nearby
- Pedigree cattle sold for breeding
- Project provided £1000 grant for corral



Roving Herd Network



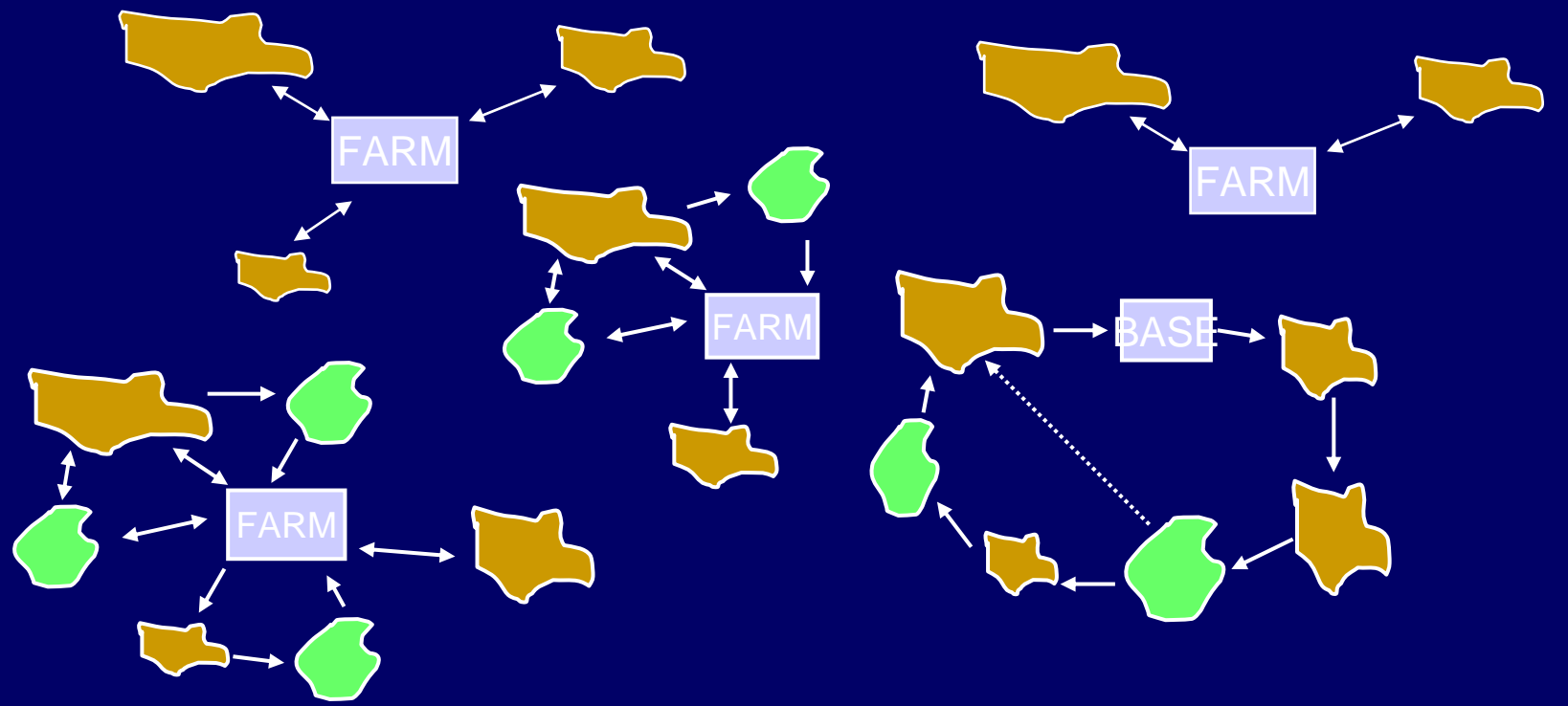
Western Herd (Roving Herd Network)






- Project developed and part funded roving herd
- Grazing sites unattractive to other graziers
- Partnership between County Council, Wildlife Trust and Gosport BC
- Five Highland cattle move between 7 sites each year
- Utilises existing equipment



Combination Approach



-  Backup land
-  Conservation site
-  Stock movement

3. Hampshire Grazing Project

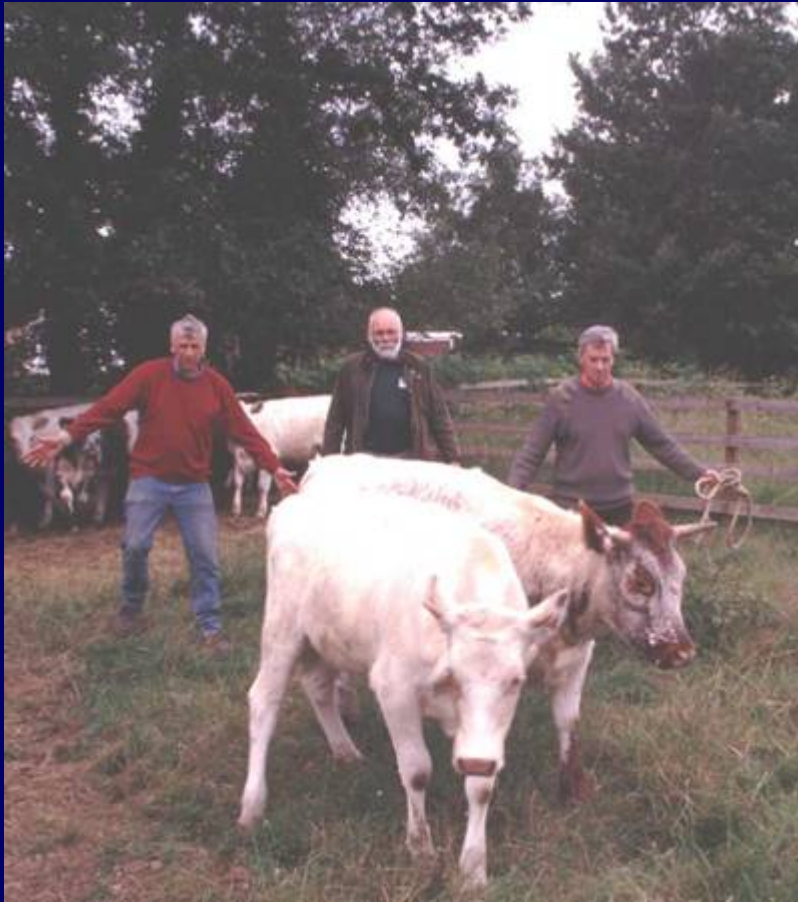
- Pilot project - Sept 1999 to March 2003
- Stage II runs from April 2003 to March 2006
- Funded by Hampshire County Council, English Nature and the Environment Agency
- Approximate annual budget of £45k
- Full-time project officer provides advice and support for conservation grazing



Hampshire
County Council



Support Measures: Advice



- Grazing regimes
- Suitable stock
- Stocking rates & timing
- Graziers' needs
- Site infrastructure
- Access issues



Support Measures: Finding Stock



- Local graziers
- Specialist graziers
- Suitable stock
- Traditional breeds
- Grazing agreements
- Grazing networks



Support Measures: Facilitation



- Provide practical solutions - tested plans and designs
- Database of specialist contractors
- Manage site works
- Develop agri-environment schemes



Support Measures: Grants



- Capital works (fencing, water, scrub removal, access, corrals)
- Up to 75% of costs
- Limit of £2k per site
- Simple paperwork and application process
- Can be used for stock purchase



Support Measures: Training



- Training courses - ‘Lookering’, Stock Management
- Specialist themed seminars
- Field meetings – practical solutions



Looking Forwards - Sustainability



- Product development and marketing
- Assist with securing new agri-environment scheme agreements
- Improve networking
- Reduce the costs of running stock
- Improve awareness



4. Summary



Local Grazing Schemes:

- Vary in form, partners, funding and time-span
- Provide local solutions to local constraints
- Deliver sustainable grazing solutions for conservation sites
- Facilitate appropriate grazing to deliver BAP targets



Hampshire
County Council

