

Figure 4.4.6a(ii). Scenario 6a: the irreplaceability of planning units for scenario 6a - targets with boundary length modifier of 2, and high biodiversity planning units, important estuaries, cSACs and SPAs locked in, as well as targets of 20% of Annex I habitat.

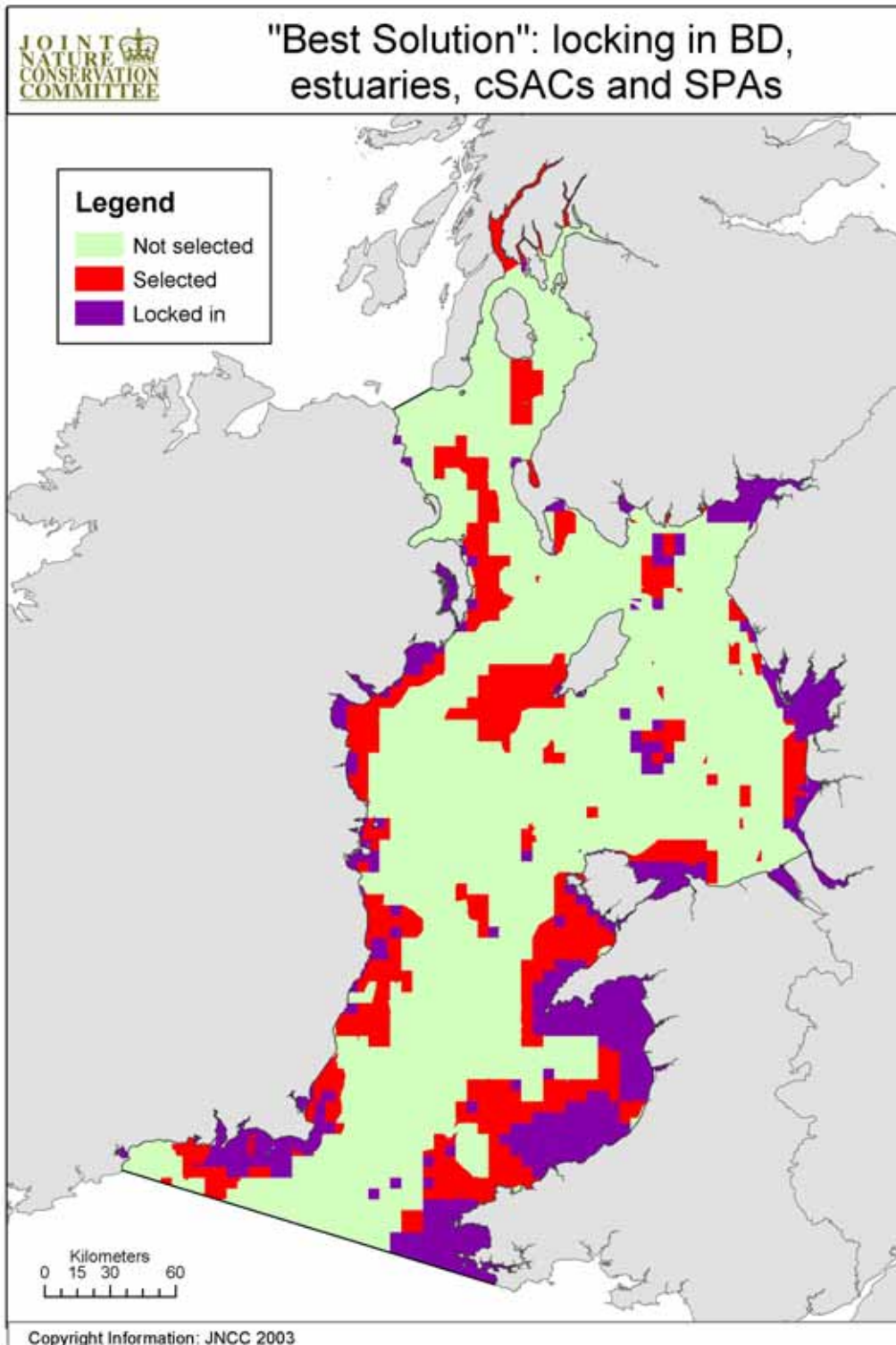


Figure 4.4.6a(ii). Scenario 6a: the 'best solution' for scenario 6a - targets with boundary length modifier of 2, and high biodiversity planning units, important estuaries, cSACs and SPAs locked in, as well as targets of 20% of Annex I habitat.

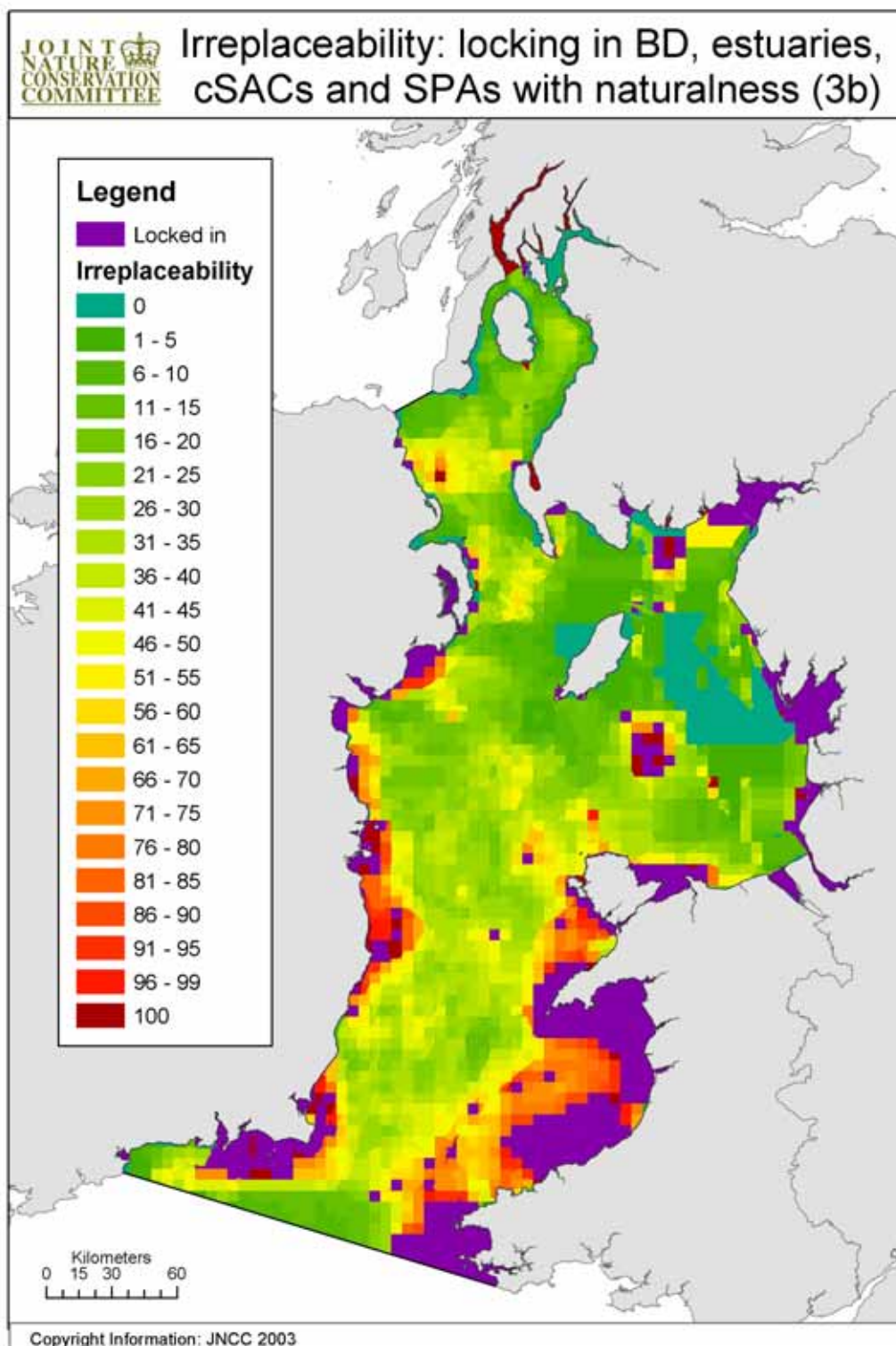


Figure 4.4.6b(i). Scenario 6b: the irreplaceability values of planning units for scenario 6b - targets with boundary length modifier of 5 and high biodiversity planning units, important estuaries, cSACs and SPAs locked in, as well as targets of 20% of Annex I habitat, with naturalness (no categories locked out – as for scenario 3a)

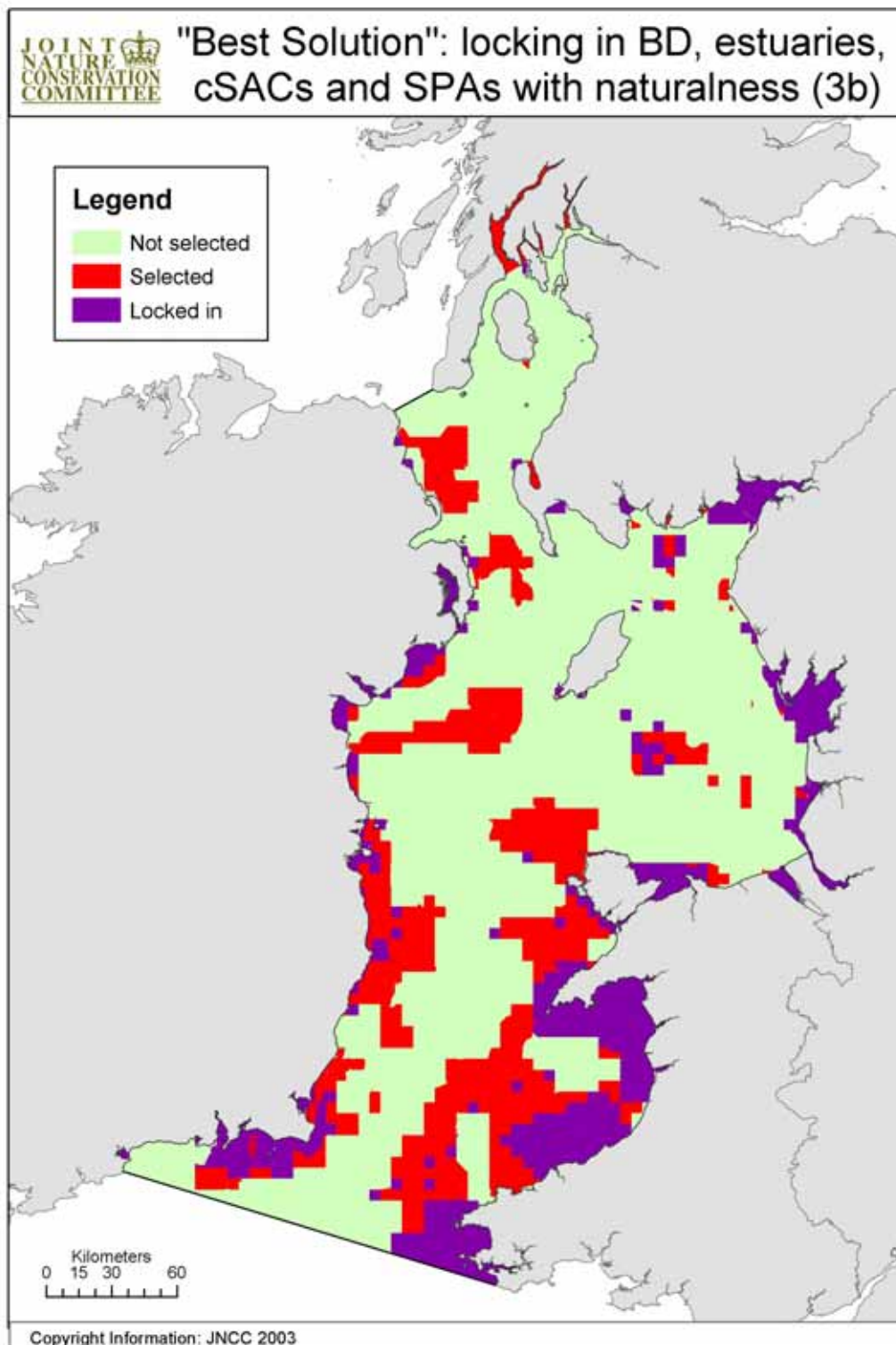


Figure 4.4.6b(ii). Scenario 6b: the 'best solution' for scenario 6b - targets with boundary length modifier of 5, and high biodiversity planning units, important estuaries, cSACs and SPAs locked in, as well as targets of 20% of Annex I habitat, with naturalness (no categories locked out – as for scenario 3a)

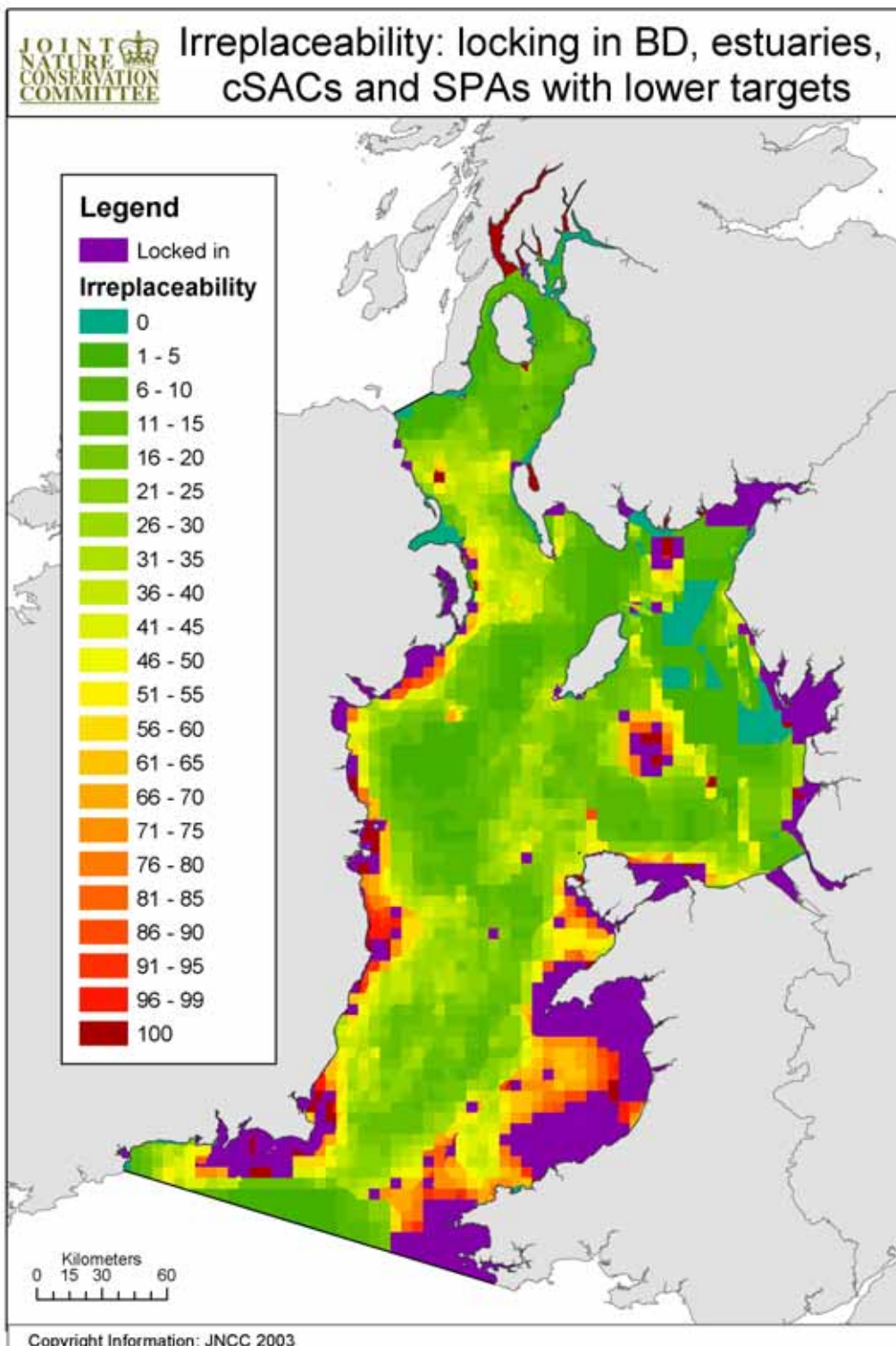


Figure 4.4.6c(i). Scenario 6c: the irreplaceability of planning units for scenario 6c - targets (lower targets for marine landscapes as in table 3.5) with boundary length modifier of 5, and high biodiversity planning units, important estuaries, cSACs and SPAs locked in, as well as targets of 20% of Annex I habitat, with naturalness (no categories locked out – as for scenario 3b)

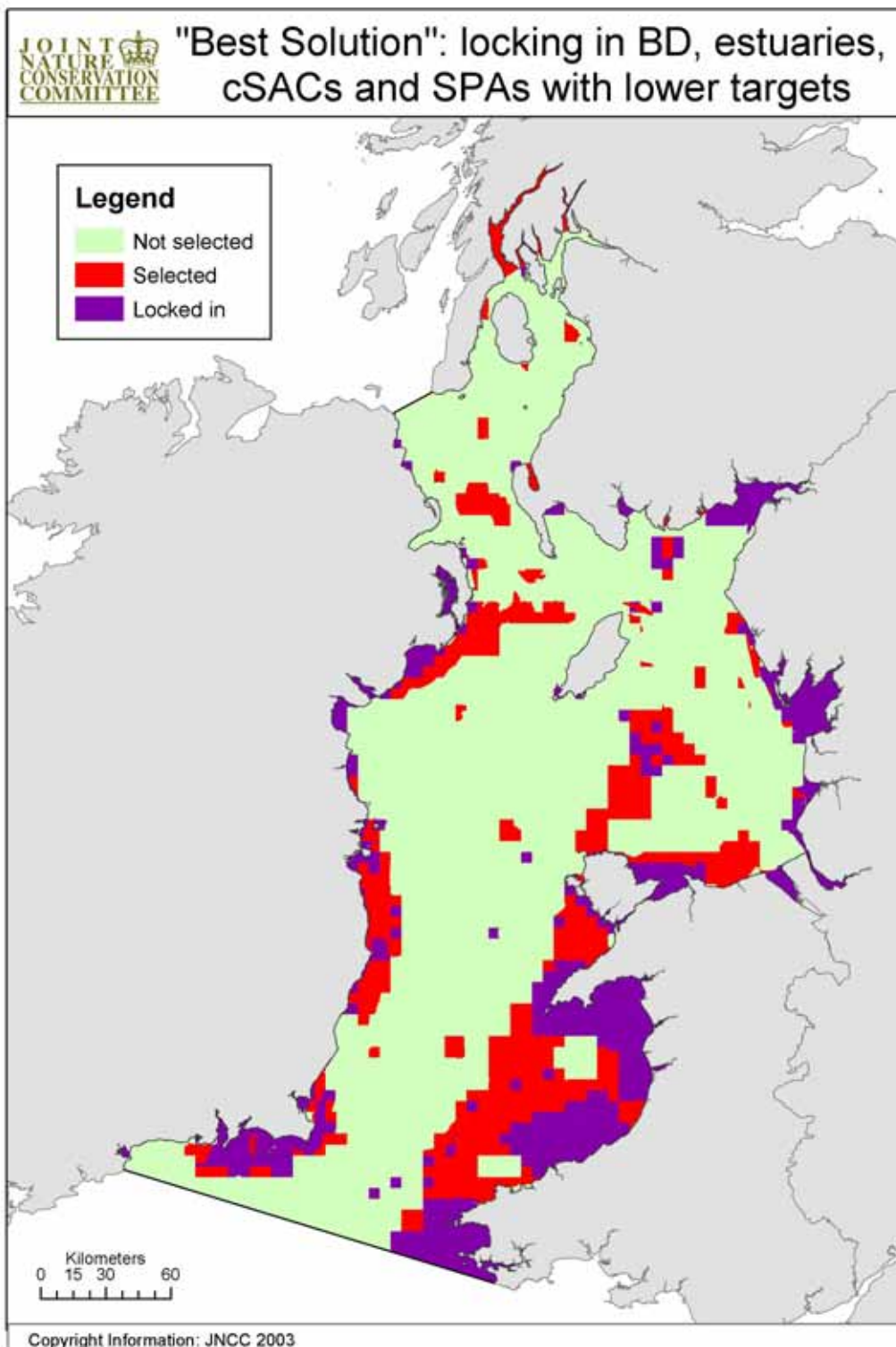


Figure 4.4.6c(ii). Scenario 6c: the 'best solution' for final scenario 6c - targets (lower targets for marine landscapes as in table 3.5) with boundary length modifier of 5, and high biodiversity planning units, important estuaries, cSACs and SPAs locked in, as well as targets of 20% of Annex I habitat, with naturalness (no categories locked out – as for scenario 3b)