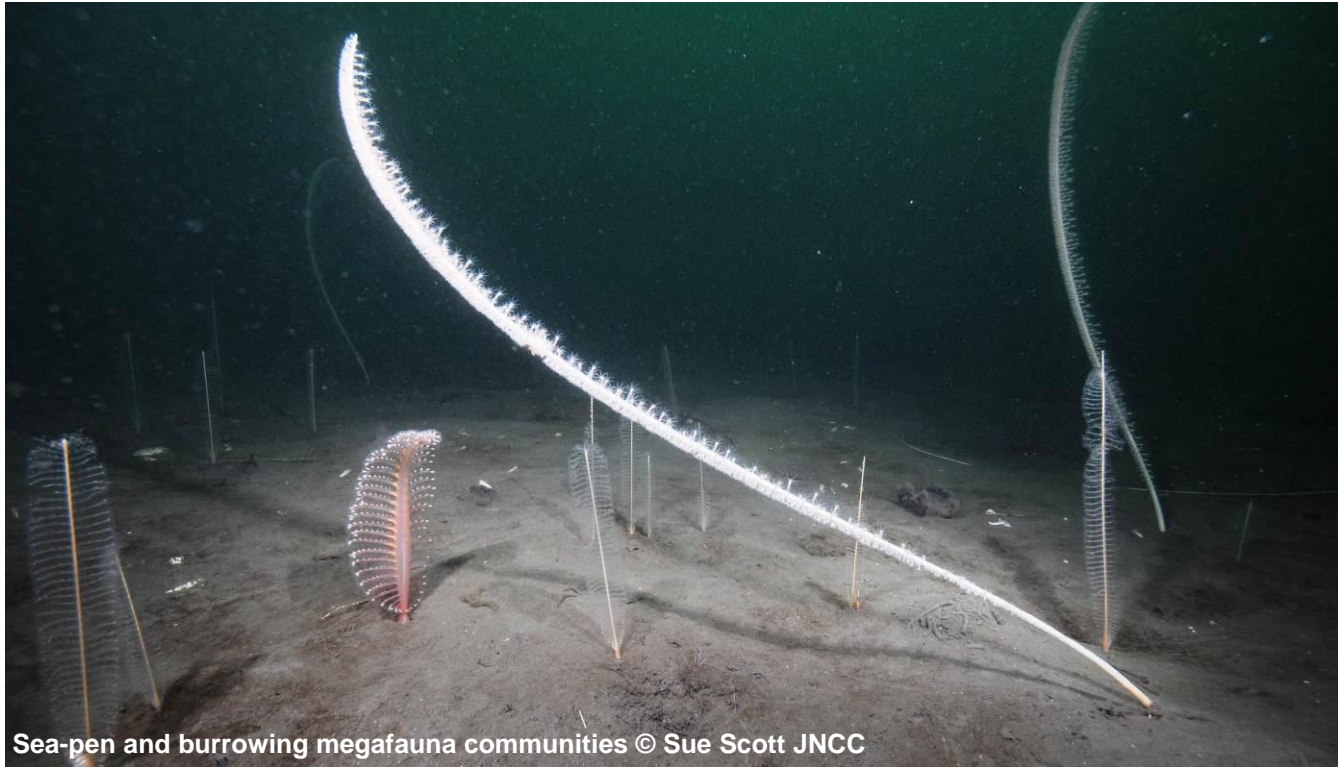


West of Walney Marine Conservation Zone

This document sets out why this site is important, the features protected and general management information.

17 January 2016



Sea-pen and burrowing megafauna communities © Sue Scott JNCC

Overview

This site becomes a Marine Conservation Zone (MCZ) in January 2016. This means that specific features within this area are protected and, where necessary, regulators will manage marine activities.

Where is the site

West of Walney is a site in the Irish Sea, off the coast of Cumbria and to the west of Walney Island. The site covers around 388km², most of which is in inshore waters, but with a small section crossing the 12 nautical mile (nm) boundary into offshore waters.

Why it's important

MCZs, together with other types of marine protected areas, will form the UK contribution to an international network of protected sites in the north east Atlantic. The network will help to deliver the government's vision of clean, healthy, safe, productive and biologically diverse oceans and seas. MCZs protect typical, rare or declining habitats and species found in our seas.

This site fills a gap in the network for mud on the seabed and sea-pen and burrowing megafauna communities. Neither of these features is sufficiently protected in the region by the current network of marine protected areas.

The seabed mud in this site is an important habitat for many animals like worms, cockles, urchins and sea cucumbers. Other larger animals, such as mud shrimps and even fish, live within this habitat and burrow into the mud. This creates networks of burrows which shelter smaller creatures like worms and brittlestars. The mud also provides a habitat for sea-pens, which are tall and luminous animals, which live in groups and get their name because they look like quill pens.

The sand on the seabed is also an important habitat. At first glance, sand may appear desert like, but close inspection can reveal flat fish and sand eels camouflaged on the surface of the sand, and worms living within it.

Designation of this site as a Marine Conservation Zone protects the following features. You can find detailed explanations of each feature at <http://jncc.defra.gov.uk/page-4527>.

| Protected features | General management approach |
|---|---------------------------------|
| Subtidal sand | Recover to favourable condition |
| Subtidal mud | Recover to favourable condition |
| Sea-pen and burrowing megafauna communities | Recover to favourable condition |

Management of the site

Now that this site has been designated, some activities may need additional management. Activities and the management measures used to regulate them may need to change if new evidence becomes available.

Most marine activity is already regulated by the relevant regulatory bodies. There are existing byelaws, national laws and European Regulations which regulators use to manage fishing, coastal development, recreation and pollution. These also apply in MCZs.

Regulators will manage each site according to the features and activities in, or near, a specific area. Management measures will be implemented at sites most at risk of damage first, regulating only those activities which have a detrimental impact on the designated features. Any management measures that are required for MCZs will be applied on a case-by-case basis.

Management in MCZs can take several different forms, from using the existing licensing framework, specific byelaws and orders or an EU Regulation for a site. There has to be public consultation on permanent byelaws and orders. For activities that already need a marine licence, regulators consider the MCZ in their decision as soon as the site is consulted on. Find out more about marine licensing in MCZs at <https://www.gov.uk/government/publications/marine-conservation-zones-mczs-and-marine-licensing>.

Regulators

This table lists the authorities responsible for MCZs and the activities they manage.

| Lead regulator | What it manages |
|--|---|
| Inshore Fisheries and Conservation Authorities (IFCAs) http://www.association-ifca.org.uk | <ul style="list-style-type: none"> Fisheries in the inshore area (0-6 nautical miles (nm)) including commercial fisheries and recreational sea angling |
| Marine Management Organisation (MMO) https://www.gov.uk/government/organisations/marine-management-organisation | <ul style="list-style-type: none"> Fisheries in the 6-12nm area Fisheries: enforcement of national and EU legislation Licensable activities such as dredging and disposal of dredged material, removal of gravel below mean high water springs, subsea cables (up to 12nm), construction (including renewables below 100MW generating capacity, ports and coastal protection) Harbour Orders and Harbour Empowerment Orders Section 36 of the Electricity Act 1989 and safety zones for offshore renewable energy installations consents Enforcement of licensable activity and other consents (including deemed marine licences) Development of marine plans Activities requiring a wildlife licence |
| Environment Agency (EA) https://www.gov.uk/government/organisations/environment-agency | <ul style="list-style-type: none"> Fisheries for migratory and freshwater fish Coastal protection and flood management Water quality Permitted discharges from terrestrial sources |
| Department of Energy and Climate Change (DECC) https://www.gov.uk/government/organisations/department-of-energy-climate-change | <ul style="list-style-type: none"> Oil and gas related activities Renewable energy related activities |
| Harbour Authorities and local planning authorities | <ul style="list-style-type: none"> Harbour authorities have management responsibilities for the port and coastal waters within their jurisdiction Local authorities manage activities at the coast. These include coastal recreation, tourism, economic regeneration, flood protection and planning on coasts and estuaries. For further information contact your local authority or IFCA |
| Department for Transport (DfT) https://www.gov.uk/government/organisations/department-for-transport | <ul style="list-style-type: none"> Ports, shipping, harbours, ship pollution and offshore safety |
| Natural England (NE) https://www.gov.uk/government/organisations/natural-england | <ul style="list-style-type: none"> Public access |

Further information

Read about government policy on MCZs at:

<https://www.gov.uk/government/policies/marine-environment>

See Natural England's advice on MCZs at:

<http://nepubprod.appspot.com/publication/4594304593952768>



OGL

© Crown copyright 2016

You may re-use this information (excluding logos) free of charge in any format or medium, under the terms of the Open Government Licence v.3. To view this licence visit www.nationalarchives.gov.uk/doc/open-government-licence/version/3/ or email PSI@nationalarchives.gsi.gov.uk

This publication is available at www.gov.uk/government/publications

Any enquiries regarding this publication should be sent to us at

mcz@defra.gsi.gov.uk

PB 14377