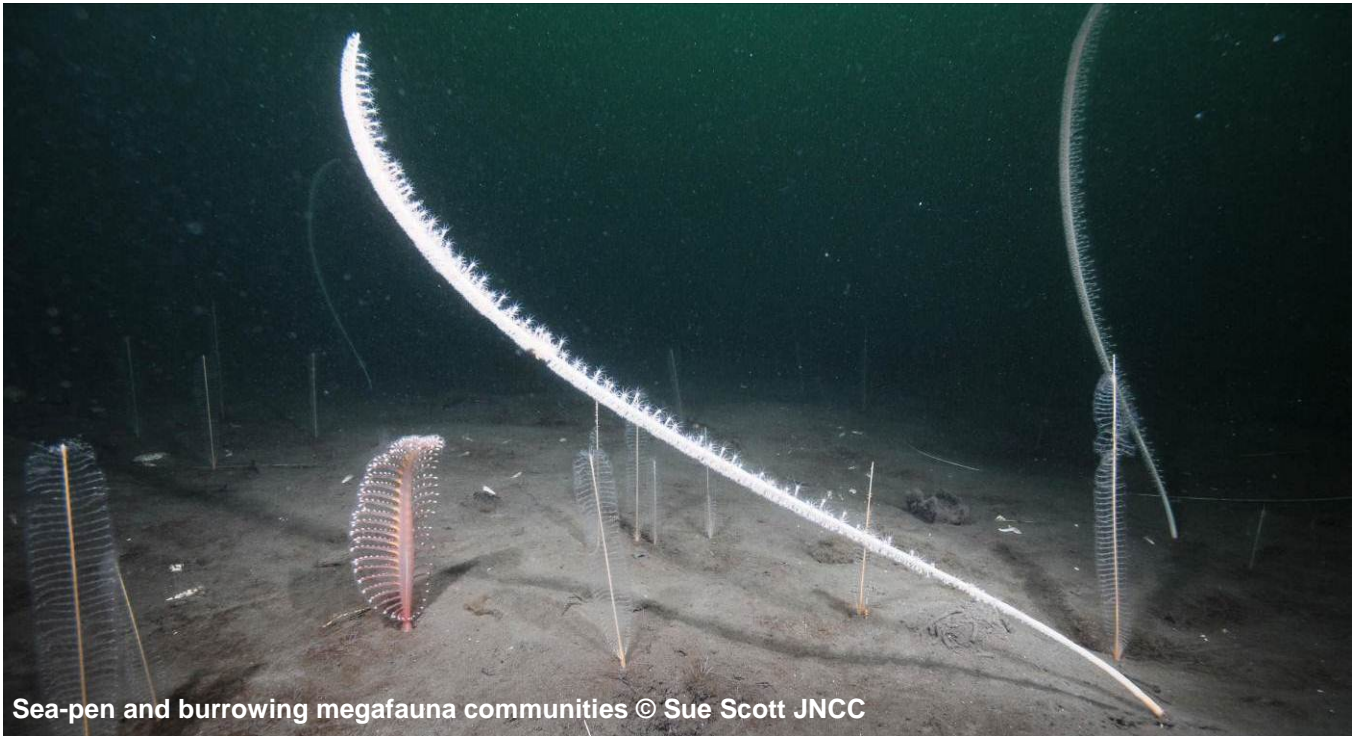


North-West of Jones Bank Marine Conservation Zone

This document sets out why this site is important, the features protected and general management information.

17 January 2016



Sea-pen and burrowing megafauna communities © Sue Scott JNCC

Overview

This site became a Marine Conservation Zone (MCZ) on 17 January 2016. This means that specific features within this area are protected and, where necessary, regulators will manage marine activities.

Where is the site

North-West of Jones Bank is an offshore site, which is around 165 km west of Land's End. The site covers around 400 km².

Why it's important

MCZs, together with other types of marine protected areas, will form the UK contribution to an international network of protected sites in the north east Atlantic. The network will help to deliver the government's vision of clean, healthy, safe, productive and biologically diverse oceans and seas. MCZs protect typical, rare or declining habitats and species found in our seas.

This site is important because it fills a gap in the network for sea-pen and burrowing megafauna communities, which are not sufficiently protected by existing marine protected areas in the region. The site also provides important protection for undersea (subtidal) mud, only a small amount of which is currently being protected in marine protected areas in this region.

The undersea mud in this site is an important habitat for many animals, like worms, cockles, urchins and sea cucumbers. Other larger animals such as mud shrimps and even fish live within this habitat and burrow into the mud. This creates networks of burrows which shelter smaller creatures like worms and brittlestars. The mud also provides a habitat for the sea-pens, which are tall and luminous soft corals which got their name because they look like quill pens.

The site also protects undersea sand. At first glance, sand may appear desert like, but close inspection can reveal flat fish and sand eels camouflaged on the surface of the sand, and worms living within it. A variety of animals also finds shelter on and in the coarse sediment and mixed sediment, which consists of a range of stones, gravels and sand.

Designation of this site as a Marine Conservation Zone protects the following features. You can find detailed explanations of each feature at <http://jncc.defra.gov.uk/page-4527>.

Protected features	General management approach
Subtidal coarse sediment	Recover to favourable condition
Subtidal sand	Recover to favourable condition
Subtidal mixed sediments	Recover to favourable condition
Subtidal mud	Recover to favourable condition
Sea-pen and burrowing megafauna communities	Recover to favourable condition

Management of the site

Now that this site has been designated, some activities may need additional management. Activities and the management measures used to regulate them may need to change if new evidence becomes available.

Most marine activity is already regulated by the relevant regulatory bodies. There are existing byelaws, national laws and European Regulations which regulators use to manage fishing, coastal development, recreation and pollution, these also apply in MCZs.

Regulators will manage each site according to the features and activities in, or near, a specific area. Management measures will be implemented at sites most at risk of damage first, regulating only those activities which have a detrimental impact on the designated features. Any management measures that are required for MCZs will be applied on a case-by-case basis.

Management in MCZs can take several different forms, from using existing licensing framework, specific byelaws and orders or an EU Regulation for a site. There has to be public consultation on permanent byelaws and orders. For activities that already need a marine licence, regulators consider the MCZ in their decision as soon as the site is consulted on. Find out more about marine licensing in MCZs at <https://www.gov.uk/government/publications/marine-conservation-zones-mczs-and-marine-licensing>.

Regulators

This table lists the authorities responsible for MCZs and the activities they manage.

Lead regulator	What it manages
Inshore Fisheries and Conservation Authorities (IFCAs) http://www.association-ifca.org.uk	<ul style="list-style-type: none"> • Fisheries in the inshore area (0-6 nautical miles (nm)) including commercial fisheries and recreational sea angling
Marine Management Organisation (MMO) https://www.gov.uk/government/organisations/marine-management-organisation	<ul style="list-style-type: none"> • Fisheries in the 6-12nm area • Fisheries: enforcement of national and EU legislation • Licensable activities such as dredging and disposal of dredged material, removal of gravel below mean high water springs, subsea cables (up to 12nm), construction (including renewables below 100MW generating capacity, ports and coastal protection) • Harbour Orders and Harbour Empowerment Orders • Section 36 of the Electricity Act 1989 and safety zones for offshore renewable energy installations consents • Enforcement of licensable activity and other consents (including deemed marine licences) • Development of marine plans • Activities requiring a wildlife licence
Environment Agency (EA) https://www.gov.uk/government/organisations/environment-agency	<ul style="list-style-type: none"> • Fisheries for migratory and freshwater fish • Coastal protection and flood management • Water quality • Permitted discharges from terrestrial sources
Department of Energy and Climate Change (DECC) https://www.gov.uk/government/organisations/department-of-energy-climate-change	<ul style="list-style-type: none"> • Oil and gas related activities • Renewable energy related activities
Harbour Authorities and local planning authorities	<ul style="list-style-type: none"> • Harbour authorities have management responsibilities for the port and coastal waters within their jurisdiction • Local authorities manage activities at the coast. These include coastal recreation, tourism, economic regeneration, flood protection and planning on coasts and estuaries. For further information contact your local authority or IFCA
Department for Transport (DfT) https://www.gov.uk/government/organisations/department-for-transport	<ul style="list-style-type: none"> • Ports, shipping, harbours, ship pollution and offshore safety
Natural England (NE) https://www.gov.uk/government/organisations/natural-england	<ul style="list-style-type: none"> • Public access

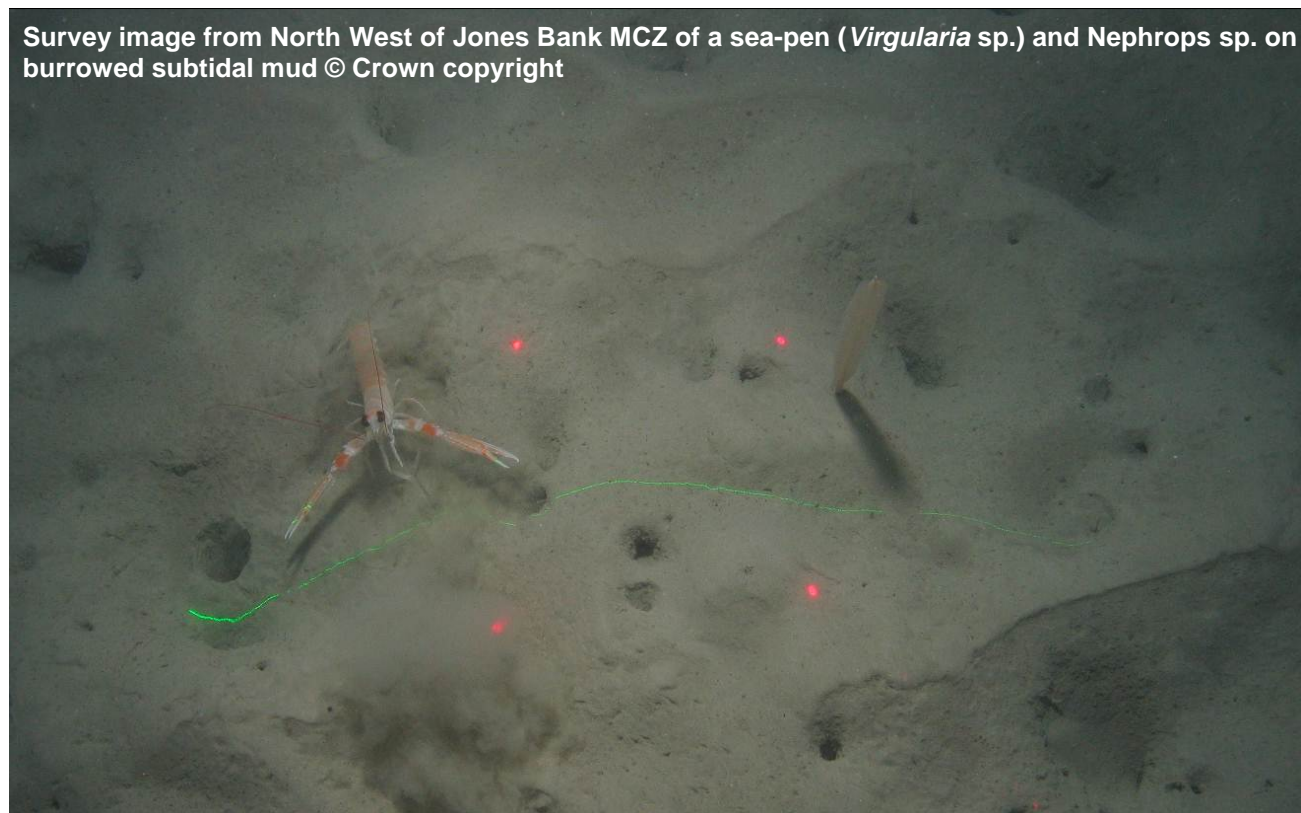
Further information

Read about government policy on MCZs at:

<https://www.gov.uk/government/policies/marine-environment>

See JNCC's advice on MCZs at:

<http://jncc.defra.gov.uk/page-6658>



OGL

© Crown copyright 2016

You may re-use this information (excluding logos) free of charge in any format or medium, under the terms of the Open Government Licence v.3. To view this licence visit www.nationalarchives.gov.uk/doc/open-government-licence/version/3/ or email PSI@nationalarchives.gsi.gov.uk

This publication is available at www.gov.uk/government/publications

Any enquiries regarding this publication should be sent to us at

mcz@defra.gsi.gov.uk

PB 14372