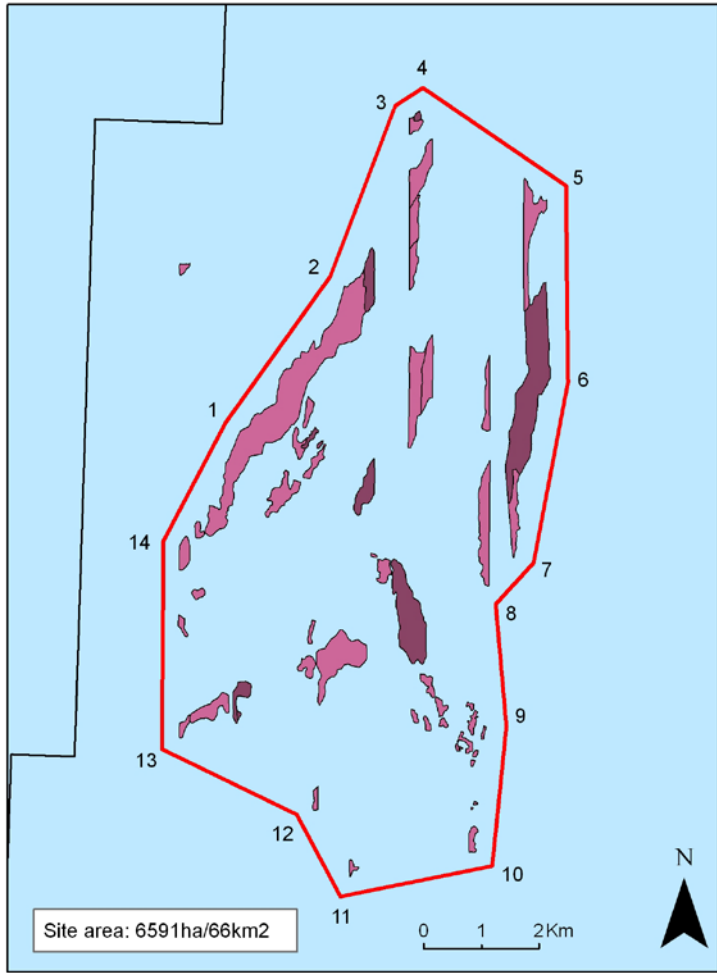


Offshore Special Area of Conservation Site Map: Croker Carbonate Slabs

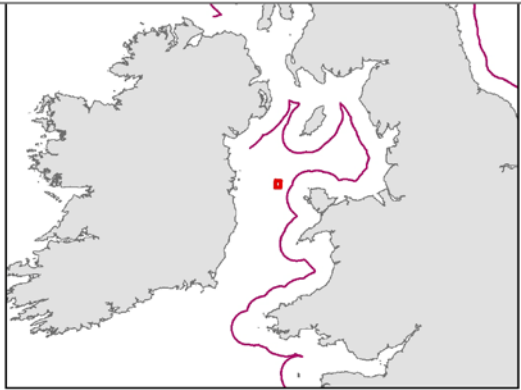


- Boundary coordinates:
- 1) 53°29'11", -5°16'48"
 - 2) 53°30'36", -5°15'13"
 - 3) 53°32'13", -5°14'16"
 - 4) 53°32'24", -5°13'51"
 - 5) 53°31'31", -5°11'32"
 - 6) 53°29'40", -5°11'25"
 - 7) 53°27'57", -5°11'52"
 - 8) 53°27'34", -5°12'26"
 - 9) 53°26'25", -5°12'13"
 - 10) 53°25'6", -5°12'22"
 - 11) 53°24'46", -5°14'45"
 - 12) 53°25'31", -5°15'28"
 - 13) 53°26'6", -5°17'38"
 - 14) 53°28'3", -5°17'43"

Legend

- Possible SAC boundary v1.0 (07/12/10)
 - UK Continental Shelf Limit
 - Land
- Annex I Habitat**
- High Relief MDAC
 - Low Relief MDAC

Location of main map in relation to the UK



Map Version number 3.0 (01/06/11) Created by LR

Site map projected in UTM (Zone 30N, WGS84 datum).
 This product has been derived in part from material obtained from the UK Hydrographic Office with the permission of the Controller of Her Majesty's Stationery Office and UK Hydrographic Office (www.ukho.gov.uk). NOT TO BE USED FOR NAVIGATION. The exact limits of the UK Continental Shelf are set out in orders made under section 1(7) of the Continental Shelf Act 1964 (© Crown Copyright). World Vector Shoreline © US Defense Mapping Agency. Map copyright JNCC 2010.

Site boundary coordinates for Croker Carbonate Slabs

Croker Carbonate Slabs	WGS 1984 (Degrees minutes Seconds)		WGS 1984 (Decimal Degrees)		
	Point No	Lat	Long	Lat	Long
	1	53°29'11"	-5°-16'-48"	53.486455	-5.27987
	2	53°30'36"	-5°-15'-13"	53.509868	-5.25354
	3	53°32'13"	-5°-14'-16"	53.536961	-5.23791
	4	53°32'24"	-5°-13'-51"	53.539919	-5.23072
	5	53°31'31"	-5°-11'-32"	53.525261	-5.19233
	6	53°29'40"	-5°-11'-25"	53.494453	-5.19014
	7	53°27'57"	-5°-11'-52"	53.465943	-5.19772
	8	53°27'34"	-5°-12'-26"	53.459333	-5.20733
	9	53°26'25"	-5°-12'-13"	53.440257	-5.20364
	10	53°25'6"	-5°-12'-22"	53.418249	-5.20612
	11	53°24'46"	-5°-14'-45"	53.412719	-5.24575
	12	53°25'31"	-5°-15'-28"	53.425392	-5.2579
	13	53°26'6"	-5°-17'-38"	53.434975	-5.2938
Centroid	50°16'40"	-1°-28'-25"	50.27789	-1.47374	