

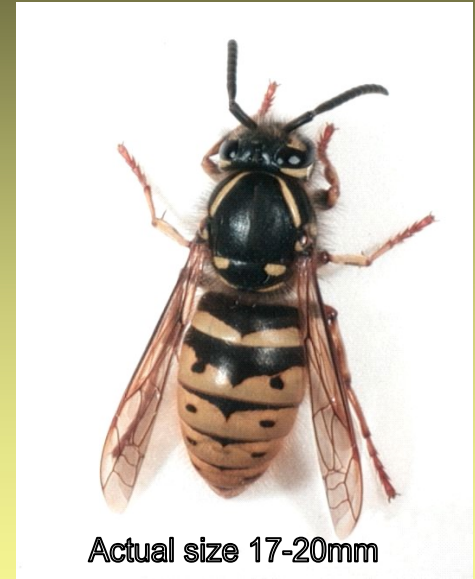
Common Wasp

Common Wasp

Vespula vulgaris

Description

- Adult workers 12-17mm are smaller than the queen wasp which is about 20mm
- It has a warning colouration of black and yellow
- In the UK, natural predators and seasonal periods of cold temperature keep the numbers in check. However here on St Helena these natural checks are absent and could lead to a rapid rise in numbers



Actual size 17-20mm

A Common Wasp.

Photo: landcareresearch.co.nz

Distribution

- They have been caught at Grapevine Gut and Sandy Bay
- They have also been seen at Cuckold's Point.

Habitat

- It builds its nest underground, making a paper ball and inside of this it has different levels, similar to that of a bee, where it stores food



Layer 1



Layer 2



Layer 3



Layer 4



Layer 5



Layer 6



Layer 7



Layer 8



Layer 9

A series of photos showing the different layers inside a wasp nest.
Photos: Andrew Darlow